

THE

TORCH

OF SIGMA DELTA TAU

FALL 2012



PRESIDENT'S MESSAGE

FALL 2012

President's Message	2
Convention 2012	4
Outstanding Alumna Award	7
Volunteer Milestones	11
National Awards	12
Hall of Fame	16
SDT Foundation	18
Breast Cancer Update	24
Where Are They Now?	26
Help Wanted	29
Stream of Life	31
Cross Country with Our Chapters	32
SDT at Texas!	33
Our Laurels are Showing	34
Every/Day Hero Campaign	39
PCAA 30 Year Anniversary	41
SDT Directory	43

ON THE COVER: Sigma Delta Tau convenes in Atlanta for the sorority's 46th Biennial National Convention.

CENTENNIAL CELEBRATION!

We are on the five-year countdown to March 25, 2017!

Sigma Delta Tau Headquarters
714 Adams Street, Carmel, IN 46032
317-846-7747

The TORCH is an educational journal published from the Sigma Delta Tau Headquarters, 714 Adams Street, Carmel, IN 46032. Editorial matters and photographs should be sent to the SDT National Headquarters or nationaloffice@sigmadeltatau.com.

EDITOR

Ann Braly

EDITORIAL STAFF

Andrea Sherrow

Leslie Glueck Brown

The inks used to print the body of the print edition of *The TORCH* publication contain a minimum of 20% by weight, renewable resources.



EnviroTech is a registered trademark.



National Panhellenic Conference

Printed in the USA



FRATERNITY
COMMUNICATIONS
ASSOCIATION

Dear Sisters,

Think about being immersed in the college football atmosphere. Imagine the energy everyone feels when the players take the field for the first time each season. Now picture the first time you walked into your sorority chapter and realized you were part of something special. Remember how it felt to wear your letters and your college colors? We are all so lucky to have that unique connection to our school and to our sorority.

Intense pride is what we feel, and as sisters of Sigma Delta Tau, we are all part of a larger team. We come from diverse chapters of SDT, where we've enjoyed memorable collegiate and alumnae experiences. We span

decades in our affiliation with Sigma Delta Tau. Yet, we are all teammates united in our efforts to advance our sisterhood. As we think of our common ideals and traditions, I propose that unity is our goal.

Unity starts with each of YOU. Every alumna, every undergraduate, every SDT sister plays a unique role in building an amazing team. Chapter Advisors are the head coaches, empowering our collegians to seek and achieve excellence. Chapter Presidents are the quarterbacks, ready to lead and set the tone for the collegians. The Chapter Executive Board represents the offensive line, working together to make sure the team executes its plays well.

As SDT alumnae, you are our biggest fans, our role models, our champions. Your support is vital! With our SDT Centennial Celebration less than five years away, it is important for each of you to unite with your individual chapters and our larger national team. Your years of sorority expertise will guide us to a stronger future and many winning seasons ahead. Please show our newest players that sisterhood in SDT is for life, not just the four years spent on a collegiate team.

Remember, one player can change anything. A TEAM can change everything. Our National Board of Directors is committed to preparing Sigma Delta Tau for the next century of sisterhood. We will be reaching out to you, our alumnae and our biggest fans, to ask for your input as we create the overall SDT game plan. Be your chapter's cheerleader to rally and unite your team. We want no one to miss out on our victory celebration ... commemorating 100 Years of Sisterhood!

Fraternally,

Michelle Keck Carlson
SDT National President



On hand to congratulate Michelle on her installation as SDT's 28th National President were parents Robert and Ethel Keck.



(Badges must be ordered through headquarters.)




A lifelong bond of friendship...

To order,
visit www.HJGreek.com or call 1.800.422.4348

- A. Plain Single Letter Guard, #0100 10K...\$50 SS...\$28
- Dangles*** 10K...\$32 SS...\$18 GP...\$11
President, #D1, Vice President, #D2,
Secretary, #D3, Scholarship Pearl, #41
- B. Snake Chain, 18", #snake GF...\$29 SS...\$18
- C. Vertical Lavalier, #L2647 10K...\$56 SS...\$26
- D. Barrel Bead Bracelet, #BJ7295 SP...\$5
- E. Barrel Bead, #bead SS...\$30
- F. Mini Torch Charm, #1962 10K, 10KW...\$65 SS...\$31
- G. Silhouette Rose Earrings, #ER141 SS...\$43
- H. Silhouette Rose Necklace, #SLD141 SS...\$77
- I. Silhouette Rose Ring, #RD141 SS...\$35
- J. Imperial Onyx Ring with pearls, #2400 10K, 10KW...\$301 SS...\$108
- K. Large Pearl Toggle Bracelet, 7.5", #636008 SS...\$53
- L. Stacked Rings, #335GR (Whole sizes 6 – 9 only.) Stainless steel...\$50
- M. Oval Crested Signet Ring, #0345 10K, 10KW...\$292 SS...\$91
- N. Wide Cuff Bracelet with crest, #SB497 SS/GP...\$155
- O. Faux Leather Cuff Bracelet with crest, #B4212 SP or GP...\$25



*To view the complete selection of dangles,
visit www.HJGreek.com

 Find us on Facebook: www.facebook.com/hjgreek

Colored jewels are synthetic. K – karat gold, SS – sterling silver, GP – gold-plated, GF – gold-filled

Always

ΣΔΤ

Always



Convention 2012
Atlanta, Georgia

Hundreds of undergraduate and alumnae sisters of Sigma Delta Tau participated in the Sorority's 46th Biennial National Convention in Atlanta, Georgia last June. The Westin Buckhead was the perfect setting for making new friends, learning new skills, celebrating outstanding achievements, and reconnecting with our Atlanta alumnae.

SDT Convention Chairmen Carli Haber, Jayme Shilkrot, Aliyah Markowitz, and Meredith Tiras orchestrated a perfect weekend. Professional speakers, sponsored by our SDT Foundation,

included Jessica Gordon Williams of Phired Up Productions and David Stollman of Campuspeak. Jessica prepared a dynamic, personalized, in-depth recruitment system for SDT, while David challenged the undergraduate officers to insert some backbone into their membership standards. His message resonated throughout the weekend: There is no room in Sigma Delta Tau for women who do not support the Sorority's core values.

Highlights of the weekend included the presentation of Sigma Delta Tau's "Outstanding Alumna of the Year" Award to Marilyn Saikin Stahl, Tau '58, the installation of the 2012-14 National Board of Directors, the initiation of two fabulous new alumnae sisters: Ghita Shorr and Phyllis Schwartz Hengst, Mike Dilbeck's workshop on The Every/Day Hero Campaign, and the presentation of seven Diamond Chapter Awards.

Philanthropy was the focus of the weekend agenda, as attendees contributed children's backpacks, filled with school supplies, to be donated to local Jewish Women International shelters in Atlanta. SDT chapters were recognized by Prevent Child Abuse America for record-breaking donations of over \$180,000.

Three hundred guests enjoyed the Atlanta Alumnae Reception and Luncheon given in their honor. Eighteen National volunteers were recognized for their outstanding years of service to Sigma Delta Tau. Top honors went to Beth McQueen Sesler, Past National President, who was honored for 30 years of volunteer service.

The primary goal of the 2012 National Convention Team was to instill in every sister's heart what it means to be a leader, both in and outside of the chapter. The convention body learned this and more, leaving Atlanta with new friends, renewed enthusiasm, lofty goals, and a deep sense of sisterhood ... certainly all the ingredients necessary to represent our organization as Empowering Women... and continue living Always SDT!



SDT OLYMPICS on opening night sets the tone for a weekend of powerful team building competition!





SDT NATIONAL BOARD OF DIRECTORS 2012-14 Top (L-R): Lynn Berman Marano, Debbie Reduce Eleftheriou, Amy Mitchell Krouse, Tami Goldstein Ackerman. Front: Caren Silverman, Margaux Manley Lima, Michelle Keck Carlson, Rachel Grey Ellis, Alexis Poe Feder.



ABOVE: Convention Team: Carli Haber, Meredith Tiras, Jayme Shilkrot, and Aliyah Markowitz. LEFT: Phyllis Schwartz Hengst joins the rest of her SDT family as a newly initiated sister! From left: Meredith Tiras, Charlotte Hengst Pluta, Phyllis, and Natalie Hengst Tiras celebrate the initiation. Phyllis is the daughter of Hirsch Schwartz, who built SDT's first University of Texas Chapter House, and is the sister of Jean Schwartz Burke, Past SDT National Board Member and SDT's first Chapter Consultant.





Past National President Beth Metzger Gruber presents Marilyn Saikin Stahl with SDT's Outstanding Alumna of the Year Award at the SDT National Convention.



Outstanding Alumna 2012

Marilyn Saikin Stahl, SDT's Outstanding Alumna of the Year, has mentored and inspired SDT sisters for more than five decades, while making historic contributions to her Austin, Texas community. Randi Shade, Tau Chapter President 1987, reports, "Marilyn's passion and determination to get a project done are matched only by her thoughtfulness and sensibility about how to get it done. She has inspired countless women in Austin to be the community leaders we have become. She is smart and forward-thinking and continues to touch the lives of women on campus, in the community, and beyond." Joining Randi in nominating Marilyn for this prestigious honor were Tau alumnae Helen Grossfeld Gilbert and Suzanne Saikin Newberg.

Our 2012 award winner has served in many capacities as a leader of Austin's Jewish Community, from founder and director of the Jewish Community Center's Early Childhood Program to president of the Sisterhood to president of Congregation Agudas Achim to president of the Jewish Federation of Austin. She has also served the United Synagogue of Conservative Judaism as president of the Southwest Region and vice president of its National Board.

Marilyn has played a lead role in fundraising for every major capital campaign in Austin's Jewish community, a city that has seen its Jewish population more than triple in size. There is not a building or institution in the town's Jewish community that Marilyn hasn't positively impacted in the last 40 years. Marilyn has been recognized as a "Woman of Valor" by The Jewish Federation of Greater Austin for her significant contributions.

Over 300 SDTs were on-hand in Atlanta to see Marilyn Saikin Stahl become the Sorority's sixteenth recipient of the Outstanding Alumna Award. Past National President of Sigma Delta Tau, Beth Metzger Gruber, presented Marilyn with the Outstanding Alumnae Award at the Sorority's National Convention in June. Beth summarized the feelings of everyone who has ever worked with Marilyn, "Anyone who knows SDT at the University of Texas knows Marilyn Stahl. She has been Tau Chapter's primary leader, advisor, trustee, historian, and cheerleader since the 1950s. She is a master at attracting others to join her team. Our National Council was thrilled to partner with Marilyn, who has been the driving force throughout 2011-12 to ensure the successful revitalization of our University of Texas Chapter."





SDT's Social Sisterhood

Technology and social media helps sisters connect, learn, and network during the SDT Convention

During Sigma Delta Tau's Biennial National Convention, sisters used technology and social media to expand conversations beyond the walls of meeting rooms—and even state borders! Both attendees and sisters in home states were able to join in the Convention conversation using custom hashtags, sharing photos, and commenting on Facebook and blog updates.

Before arriving in Atlanta, sisters were asked to share chapter accomplishments by recording short video clips. One of the keynote speakers, David Stollman of CAMPUSPEAK, encouraged attendees to share sisterhood experiences via Twitter for inclusion in his presentation. Sisters renewed their commitment to prevent hazing by texting their pledge to the EveryDay Hero program, as well as visiting the custom SDT landing page, <http://www.ra-project.org/page/s/sdt>. A local area alumnae team extended invitations and information for the Alumnae Luncheon through Facebook networking.

Throughout the weekend convention, attendees were encouraged to tweet using the #SDTconv12 hashtag, as well as tagging "SDT Sorority" in their status updates on Facebook. On Instagram, the #SDTconv12 hashtag was also used to upload photos. Each day, photos from participants were uploaded to a Facebook album, so sisters at home could join in the Convention agenda.

Following the meeting, blog posts were published summarizing the Convention activities from both an undergraduate and alumna perspective. With hundreds of tweets published, photos shared, and Facebook comments written, our sisters "got social" and extended the Convention experience beyond the walls of the hotel. To see Convention content online, please view our photo album on Facebook (www.facebook.com/SDTSorority), search Twitter, or Instagram using the hashtag #SDTconv12, or read blog posts at: <http://bit.ly/LSplQB>.





National volunteers
and collegiate chapter
officers celebrate
sisterhood in Atlanta . . .
Always SDT!



ABOVE: MORE THAN THREE HUNDRED attendees enjoy the SDT Atlanta Alumna Luncheon, held on June 30, 2012 at the Westin Buckhead. BELOW: CLOSING BANQUET National Council Members Lindsay Braverman and Rachel Kasen congratulate Convention Chairman Carli Haber on a job well done!





PAST NATIONAL PRESIDENTS: (Top) Lynn Berman Marano, Marissa Altman Gottfried, Amy Mitchell Krouse, Bobby Katz Sacks. (Front) Mardi Swartz Kunik, Sari Gold Factor, Chickie Stein Loewenstein, Beth Metzger Gruber.



VOLUNTEER MILESTONES RECOGNIZED

National Council Recognition

Volunteer Service on SDT's National Council:

Beth McQueen Sesler – Thirty Years
 Carol Posner Goldstein – Twenty-Five Years
 Leslie Glueck Brown – Twenty Years
 Marissa Altman Gottfried – Twenty Years
 Beth Metzger Gruber – Twenty Years
 Jane Agid Metzger – Twenty Years
 Michelle Keck Carlson - Fifteen Years
 Stefanie Greenberg Chautin - Fifteen Years
 Robin Rodenberg English – Fifteen Years
 Alexis Poe Feder – Fifteen Years
 Tami Goldstein Ackerman – Ten Years
 Melissa Held Rubin – Ten Years
 Vanessa Facio-Lince – Five Years
 Melissa Gitlitz – Five Years
 Melanie Muscoplat Gray – Five Years
 Stephanie White Hemmann – Five Years
 Carley Kramer – Five Years
 Jayme Shilkrot – Five Years
 Diane Levine Smith – Five Years
 Andrea Sour – Five Years
 Diana Manvitz Williams – Five Years

SDT NATIONAL AWARDS

2011-2012

Regene Freund Cohane Outstanding Chapter President

Daryn Foster

Gamma Mu, Northeastern University

Outstanding Senior

Kelly Bechtol

Gamma Eta, University of South Florida

Ruth Metzger Katz Outstanding Junior

Elizabeth Sira

Gamma Mu, Northeastern University

Harriet Burghelm Rodenberg Outstanding

Panhellenic Representative

Micaela Holland

Alpha Iota, Tulane University

Patricia Jackson Linderman Outstanding Chapter

Treasurer

Lindsey Winer

Gamma Lambda, Florida State University



Daryn Foster, Northeastern University, is presented the Outstanding Chapter President Award from SDT National President Amy Krouse.



SDT PURDUE CHAPTER PRESIDENT Kelsey Luse accepts the Rising Star Chapter Award from National Vice President Debbie Eleftheriou.

PEARL WINNERS

The following chapters exemplify our highest standards. A criterion for chapter excellence has been established in seven areas, which correspond with the seven pearl requirements for our Torch badge:

ADMINISTRATION

Alpha, Cornell University
Eta, University of Georgia
Kappa, University of Illinois
Upsilon, Indiana University
Chi, University of Michigan
Psi, University of Massachusetts
Alpha Beta, University of Rhode Island
Alpha Epsilon, Purdue University
Alpha Theta, University of Maryland
Alpha Mu, University of Miami

Alpha Nu, University of Wisconsin
Alpha Upsilon, Bradley University
Beta Beta, Michigan State University
Beta Pi, University of Rochester
Beta Rho, University of Virginia
Beta Tau, Rutgers University
Beta Chi, University of Kansas
Gamma Beta, SUNY Albany
Gamma Delta, American University

Gamma Kappa, SUNY Oswego
Gamma Lambda, Florida State University
Gamma Mu, Northeastern University
Gamma Nu, SUNY New Paltz
Gamma Xi, Montclair State University
Gamma Rho, Ramapo College of New Jersey
Gamma Tau, Columbia University
Gamma Upsilon, SUNY Plattsburgh
Delta Alpha, Eastern Michigan University
Delta Zeta, Rutgers University, Camden
Delta Kappa, Western Connecticut State University

MEMBERSHIP RECRUITMENT

Alpha, Cornell University
Eta, University of Georgia
Kappa, University of Illinois
Mu, University of Southern California
Rho, University of Alabama
Tau, University of Texas
Upsilon, Indiana University
Chi, University of Michigan
Psi, University of Massachusetts
Alpha Epsilon, Purdue University
Alpha Theta, University of Maryland
Alpha Iota, Tulane University
Alpha Mu, University of Miami
Alpha Tau, George Washington University



BETA TAU CHAPTER at Rutgers University takes home four National Awards, including SDT's Diamond Chapter Award. Pictured left to right: Christina Roman, Melissa Bardin, Melinda Jensen, Katrina Heinig, Debbie Eleftheriou, Frannie Kenajian, Charlene Fischer, Chessea Grossman, Lindsay Lieberman, and Amanda Kateman.

Alpha Upsilon, Bradley University
 Beta Zeta, Queens College
 Beta Pi, University of Rochester
 Beta Rho, University of Virginia
 Beta Tau, Rutgers University
 Beta Chi, University of Kansas
 Gamma Epsilon, SUNY Oneonta
 Gamma Eta, University of South Florida
 Gamma Lambda, Florida State University
 Gamma Mu, Northeastern University
 Gamma Xi, Montclair State University
 Gamma Rho, Ramapo College of New Jersey
 Gamma Sigma, Johnson and Wales
 Gamma Tau, Columbia University
 Gamma Phi, York College of Pennsylvania
 Gamma Chi, SUNY Geneseo
 Delta Gamma, Brandeis University
 Delta Epsilon, Emory University
 Delta Zeta, Rutgers University, Camden
 Delta Eta, College of Charleston
 Delta Kappa, Western Connecticut State University

NEW MEMBER EDUCATION AND DEVELOPMENT

Alpha, Cornell University
 Eta, University of Georgia
 Mu, University of Southern California
 Rho, University of Alabama
 Tau, University of Texas
 Upsilon, Indiana University
 Chi, University of Michigan
 Psi, University of Massachusetts
 Alpha Epsilon, Purdue University
 Alpha Zeta, University of Pittsburgh
 Alpha Theta, University of Maryland
 Alpha Iota, Tulane University
 Alpha Mu, University of Miami
 Alpha Nu, University of Wisconsin
 Alpha Tau, George Washington University
 Beta Beta, Michigan State University
 Beta Zeta, Queens College
 Beta Xi, Union College
 Beta Pi, University of Rochester
 Beta Rho, University of Virginia
 Beta Tau, Rutgers University
 Gamma Delta, American University
 Gamma Eta, University of South Florida

Gamma Iota, University of Hartford
 Gamma Kappa, SUNY Oswego
 Gamma Lambda, Florida State University
 Gamma Mu, Northeastern University
 Gamma Nu, SUNY New Paltz
 Gamma Rho, Ramapo College of New Jersey
 Gamma Tau, Columbia University
 Gamma Phi, York College of Pennsylvania
 Gamma Chi, SUNY Geneseo
 Gamma Omega, Adelphi University
 Delta Alpha, Eastern Michigan University
 Delta Gamma, Brandeis University
 Delta Epsilon, Emory University
 Delta Zeta, Rutgers University, Camden
 Delta Eta, College of Charleston
 Delta Theta, Pace University
 Delta Iota, Nova Southeastern University

SCHOLARSHIP

Alpha, Cornell University
 Kappa, University of Illinois
 Mu, University of Southern California
 Upsilon, Indiana University

Phi, Pennsylvania State University
 Chi, University of Michigan
 Psi, University of Massachusetts
 Alpha Epsilon, Purdue University
 Alpha Theta, University of Maryland
 Alpha Iota, Tulane University
 Alpha Mu, University of Miami
 Beta Zeta, Queens College
 Beta Xi, Union College
 Beta Pi, University of Rochester
 Beta Tau, Rutgers University
 Beta Chi, University of Kansas
 Gamma Delta, American University
 Gamma Eta, University of South Florida
 Gamma Kappa, SUNY Oswego
 Gamma Lambda, Florida State University
 Gamma Mu, Northeastern University
 Gamma Xi, Montclair State University
 Gamma Rho, Ramapo College of New Jersey
 Gamma Upsilon, SUNY Plattsburgh
 Gamma Chi, SUNY Geneseo
 Delta Alpha, Eastern Michigan University
 Delta Gamma, Brandeis University



UNIVERSITY OF MARYLAND Sig Dels celebrate an award-winning evening in Atlanta. Pictured left to right: Miriam Brand, Hannah Bock, Jenn Salko, Ilana Avergun, Advisor Chickie Loewenstein, Julie Golden, and Jenna Levine.

Delta Theta, Pace University
Delta Iota, Nova Southeastern University

CHAPTER PROGRAMMING

Alpha, Cornell University
Eta, University of Georgia
Kappa, University of Illinois
Upsilon, Indiana University
Phi, Pennsylvania State University
Chi, University of Michigan
Psi, University of Massachusetts
Alpha Epsilon, Purdue University
Alpha Theta, University of Maryland
Alpha Iota, Tulane University
Alpha Mu, University of Miami
Alpha Upsilon, Bradley University
Beta Beta, Michigan State University
Beta Zeta, Queens College
Beta Xi, Union College
Beta Rho, University of Virginia
Beta Tau, Rutgers University
Beta Chi, University of Kansas
Gamma Eta, University of South Florida
Gamma Lambda, Florida State University
Gamma Mu, Northeastern University
Gamma Nu, SUNY New Paltz
Gamma Xi, Montclair State University
Gamma Rho, Ramapo College of New Jersey
Gamma Sigma, Johnson and Wales
Delta Alpha, Eastern Michigan University

Delta Zeta, Rutgers University, Camden
Delta Eta, College of Charleston
Delta Theta, Pace University
Delta Kappa, Western Connecticut State University

LEADERSHIP DEVELOPMENT

Alpha, Cornell University
Eta, University of Georgia
Kappa, University of Illinois
Mu, University of Southern California
Rho, University of Alabama
Tau, University of Texas
Upsilon, Indiana University
Phi, Pennsylvania State University
Chi, University of Michigan
Alpha Theta, University of Maryland
Alpha Mu, University of Miami
Alpha Upsilon, Bradley University
Beta Beta, Michigan State University
Beta Zeta, Queens College
Beta Xi, Union College
Beta Pi, University of Rochester
Beta Rho, University of Virginia
Beta Tau, Rutgers University
Gamma Epsilon, SUNY Oneonta
Gamma Eta, University of South Florida
Gamma Lambda, Florida State University
Gamma Mu, Northeastern University
Gamma Xi, Montclair State University
Gamma Rho, Ramapo College of New Jersey
Gamma Phi, York College of Pennsylvania



AWARD WINNING USC! Mu Chapter Delegates Audrey Mulholland and Jocelyn Dicker take home six pearl certificates and the Outstanding Scholarship Award!

Gamma Chi, SUNY Geneseo
Delta Eta, College of Charleston
Delta Theta, Pace University

ALUMNAE

Alpha, Cornell University
Eta, University of Georgia
Kappa, University of Illinois
Mu, University of Southern California
Rho, University of Alabama
Tau, University of Texas
Upsilon, Indiana University
Phi, Pennsylvania State University
Psi, University of Massachusetts
Alpha Beta, University of Rhode Island

Alpha Epsilon, Purdue University
Alpha Zeta, University of Pittsburgh
Alpha Theta, University of Maryland
Alpha Iota, Tulane University
Alpha Mu, University of Miami
Alpha Nu, University of Wisconsin
Alpha Upsilon, Bradley University
Beta Beta, Michigan State University
Beta Zeta, Queens College
Beta Xi, Union College
Beta Pi, University of Rochester
Beta Rho, University of Virginia
Beta Tau, Rutgers University



FLORIDA STATE UNIVERSITY sisters are proud to be named a Diamond Chapter! Pictured left to right: Rachel Kasen, Alexis Josephson, Lindsey Fields, Ilana Weinstein, Heather Weisbrod, Nicki Ressler, Kelsey London, Marissa Weisman, and Carolina Echeverri.

Beta Chi, University of Kansas
 Gamma Beta, SUNY Albany
 Gamma Delta, American University
 Gamma Epsilon, SUNY Oneonta
 Gamma Eta, University of South Florida
 Gamma Kappa, SUNY Oswego
 Gamma Lambda, Florida State University
 Gamma Mu, Northeastern University
 Gamma Nu, SUNY New Paltz
 Gamma Xi, Montclair State University
 Gamma Rho, Ramapo College of New Jersey
 Gamma Tau, Columbia University
 Gamma Phi, York College of Pennsylvania

Gamma Chi, SUNY Geneseo
 Gamma Omega, Adelphi University
 Delta Alpha, Eastern Michigan University
 Delta Gamma, Brandeis University
 Delta Epsilon, Emory University
 Delta Zeta, Rutgers University, Camden
 Delta Theta, Pace University
 Delta Kappa, Western Connecticut State University

CHAPTER AWARDS 2011-2012

**OUTSTANDING
CHAPTER OF THE YEAR**
 Beta Tau, Rutgers University

DIAMOND CHAPTERS

Alpha, Cornell University
 Alpha Theta, University of Maryland
 Alpha Mu, University of Miami
 Beta Tau, Rutgers University
 Gamma Lambda, Florida State University
 Gamma Mu, Northeastern University
 Gamma Rho, Ramapo College

OUTSTANDING CHAPTER ADVISORS

Christina Roman
 Gamma Rho, Ramapo College
 Randi Siegel
 Gamma Lambda, Florida State University

HOSPITALITY

Beta Chi, University of Kansas
 Gamma Lambda, Florida State University
 Gamma Mu, Northeastern University

PREVENT CHILD ABUSE AMERICA

Eta, University of Georgia
 Alpha Mu, University of Miami
 Gamma Eta, University of South Florida

COMMUNITY SERVICE

Beta Tau, Rutgers University
 Gamma Kappa, SUNY Oswego
 Gamma Mu, Northeastern University

OUTSTANDING CHAPTER PROGRAMMING

Eta, University of Georgia
 Beta Tau, Rutgers University
 Gamma Tau, Columbia University

OUTSTANDING SCHOLARSHIP PROGRAM

Mu, University of Southern California
 Gamma Mu, Northeastern University

RISING STAR

Alpha Epsilon, Purdue University
 Gamma Xi, Montclair University



CORNELL ADVISOR Tiffani Ziemann (center) congratulates Alpha Chapter Delegates Jessica Levy, and Abigail Zatz on their Diamond Chapter Award.

HALL OF FAME

2011–2012



Erica Soble



Sarah Lewis



Stephanie Altschuler



Monica Feakes



Julia Barnard

Sigma Delta Tau's first HALL OF FAME class was announced in 1941. For more than seven decades, the SDT National Board of Directors has selected more than 700 outstanding senior women to be included in this elite society of exceptional chapter leaders.

ERICA SOBLE, *Eta, University of Georgia*

Vice President of New Member Education...Standards Board...Pearl Mom...Outstanding Sophomore, Junior, and Senior...President of Jewish Business Leadership Organization

SARAH LEWIS, *Alpha Iota, Tulane University*

Executive Board Sisterhood Chairman...Collegiate Leadership Team...Tulane Chabad Student Board...Social Chairman for Neuroscience Association...Sisterhood Committee

STEFANIE ALTSCHULER, *Alpha Mu, University of Miami*

Chapter President...Internal Secretary...University of Miami Career Center Campus Events...Order of Omega...Rho Lambda...Campus Ambassador for ICAP

MONICA FEAKES, *Beta Tau, Rutgers University*

Dance Marathon Representative...RU4 Kids Adopt-A-Child Liaison...Standards Board Member...Recruitment Committee Member

JULIA BARNARD, *Beta Chi, University of Kansas*

Vice President of Scholarship...Community Service Chairperson...Standards and Slating Committees...Co-Director University's Alternative Breaks Program...Student Senate, Mortar Board...Order of Omega...Honors Kappa...KU Hillel

KELLY BECHTOL, *Gamma Eta, University of South Florida*

Chapter President...Social Director...SDT National Collegiate Leadership Team...Sisterhood Chairman...Alumnae and Parent Relations Chairman...Housing Chairman...Historian

ERIN DURKIN, *Gamma Mu, Northeastern University*

Chapter Vice President...Social Chairman...Assistant Vice President of Recruitment...Special Events Chairman...Public Relations Chairman...Greek Week Chairman...Standards Board Member...Order of Omega...Sigma Alpha Lambda Communications Honors Society...Senior Committee Advisory Board...Northeastern's Class of 2012 Top 100 Most Influential Seniors...Dean's List

GRACE BLAKE, *Gamma Xi, Montclair State University*

Chapter President...Chapter Vice President...Greek Council...Order of Omega...Student Leadership Team...Director of Greek Life...President's Cabinet of the Student Government Association...Order of Omega

NATASHA GORDON, *Gamma Tau, Columbia University*

Standards Board Chairman...Chapter Secretary...Panelist on the Columbia University Greek Judicial Board...Student Panelist on the Columbia University Disciplinary Procedure for Sexual Assault Panel...Greek Judicial Board

DANA BAHIR, *Delta Gamma, Brandeis University*

Chapter Vice President...Chapter Treasurer...New Member Education Chairman...Representative to the Greek Council...Alumnae Chairman



Kelly Bechtol



Erin Durkin



Grace Blake



Natasha Gordon



Dana Bahir



Kathy Kaplan Parven and Mardi Swartz Kunik, along with two baseball players from the Detroit area, proudly display the 2012 Sharing HeARTS shirts, as well as donated art supplies, for the JCC Cares Community.

JCC Maccabi Games: Going For the Gold

The JCC Maccabi Games have been offering Jewish teens a unique social, cultural, and life-shaping experience since 1982. At this Jewish Olympic style event, each athlete participates in one of fourteen sports, partakes in social and cultural events, and shares many opportunities to help others during the weeklong experience. Recently, MaccabiArtsFest was established, wherein teens could participate in master-type classes for various art disciplines such as painting and drawing, culinary, rock band, dance, and many more.

Two very special Tau Chapter roommates from the early 1980s, Mardi Swartz Kunik and Kathy Kaplan Parven, donated eighteen months and seven intensive weeks last summer to ensure the success of the JCC Maccabi Games and ArtsFest in Houston, Texas.

Mardi volunteered as vice chair of administration, overseeing all housing personnel in placing over 1,000 teens in homes throughout the area. Thousands of volunteers were recruited and assigned to different venues during the course of the week. Volunteer committees under Mardi's direction included the extensive areas of Hospitality, Merchandise, as well as Credentials. Credentials were organized for athletes, artists, delegation heads, coaches, host families, volunteers, and visiting spectators.

JCC Cares is the "caring and sharing day" for Maccabi Athletes and Artists, helping and teaching underprivileged special needs children in the community. Kathy served as JCC Cares vice chair and planned an exceptional day called "Sharing HeARTS," focusing on art and dance. The teens and kids participated in a specially developed visual arts activity highlighting prints and works featured in the Houston Museum of Fine Arts. They also participated in a dance event taught by local volunteer professional dancers who were all trained by the National Dance Institute. The teens presented the children with gift bags filled with art supplies and tickets to the local museums and the Houston Zoo. This "giving" experience is based on the Jewish values called TikkunOlam.

Over 100,000 teens have benefitted from the Maccabi Games over the past three decades. The energy and excitement makes it a unique and unforgettable experience for every participant, from athletes to volunteers, from coaches to host families. Mardi and Kathy agree that nurturing the teens and educating the community is what the games are all about. How remarkable these two former SDT Chapter officers would find themselves together again, three decades later, still committed to teamwork, sportsmanship, compassion, and community.



Torch Society

Torch Society members were honored with yellow roses at the Foundation luncheon during SDT's 46th Biennial Convention in Atlanta. Left is Elaine Arnovitz and Beth Gruber.



TORCH SOCIETY members are a dedicated group of donors who strive to make an impact on the lives of our youngest sisters by donating a minimum of \$250 to our general fund to help underwrite our scholarships and leadership programming. The Sigma Delta Tau Foundation would like to thank our **2012 TORCH SOCIETY!**

Diamond Level

\$5,000+

ALPHA MU

Amy Jo Corin Brodie

Lapis Level

\$1,500-\$2,499

ALPHA ZETA

Jennifer McCoy Bartko

Gold Level

\$1,000-\$1,499

EPSILON

Patty Sternebeck Beck

KAPPA

Barbara Slepyan Zax



Past National President Chickie Loewenstein is a founding member of the Foundation's Order of the Tea Rose.

TAU

Debra Mautner Tuchman

CHI

Audrey Geschelin Rose

ALPHA ZETA

Ilene Rabinowitz Fleischmann

ALPHA NU

Lynne Grundstein Groban

ALPHA OMICRON

Lara Fenig Stangel

Silver Level

\$500-\$999

EPSILON

Beth McQueen Sesler

TAU

Mardi Swartz Kunik

UPSILON

Sari Gold Factor

CHI

Phyllis Leaf Jacobs

ALPHA MU

Jane Agid Metzger

ALPHA OMICRON

Suzanne Stakofsky Lutz

ALPHA TAU

Amy Mitchell Krouse

GAMMA PSI

Michelle Keck Carlson

Bronze Level

\$250-\$499

ALPHA

Shawn Hecht Morris
Elizabeth Belsky Stiel

GAMMA

Rochelle Gross
Bobby Katz Sacks

EPSILON

Elaine Scheuer Arnovitz
Chickie Stein Loewenstein
Carol Ann Gershuny Schwartz
Beverly Gershuny Williams

KAPPA

Lois Klein Zussman

LAMBDA

Lise Rosengard
Gloria Barsimanto Simon
Nancy Rosen Spire

XI

Nina Bloch Fishman
Floriene Kay Lieberman

TAU

Phyllis Hengst
Marilyn Saikin Stahl

UPSILON

Ann Stringer Braly
Lois Cohen Eskenazi
Gale Symons Lazarus
Lesley Baker Levin
Lynn Gitlin Stein
Joan Weinberg Wolf

PHI

Laurie Bennett Augustino
Beth Metzger Gruber
Caren Silverman
Thelma Geier Zelen

CHI

Nez Shubert Gross
Corrinne Azen Krause

ALPHA BETA

Tami Goldstein Ackerman
Gail Mitchell

ALPHA DELTA

Sheila Garon Schwartz

ALPHA EPSILON

Emily Freed

ALPHA ZETA

Carley Kramer
Elysa Luick
Lynda Viggiano Reiff
Carol Garber Steiner

ALPHA ETA

SuEllen Weissman Fried

ALPHA THETA

Lynn Berman Marano

ALPHA LAMBDA

Carol Posner Goldstein

ALPHA MU

Allison Newman Cuba
Sheila Agid Kassewitz
Margaux Manley Lima

ALPHA OMICRON

Anna Maria Prinzivalli Gold

ALPHA SIGMA

Roberta Magdoff Aaronson

ALPHA UPSILON

Marcia Davis Treby
Tiffani Ziemann

BETA BETA

Rachel Grey Ellis

BETA GAMMA

Sheila Gvirts Hromadka

BETA XI

Hope Freedman

BETA PI

Diana Pankevich

HALL *of* HONOR

The Hall of Honor includes special gifts made to the SDT Foundation.



BETA CHI

Lindsay Shapiro Kvasnik

GAMMA ETA

Marissa Altman Gottfried

GAMMA SIGMA

Alexis Poe Feder

GAMMA TAU

Beth Malin

FRIENDS of the FOUNDATION

Amy Grant
Harold Hayes
Sharon Stern
Austin Community Foundation
Herff Jones, Inc
Lexis Nexis
Tau Alumnae
Texas Hillel
Texas Jewish Federation
Texas SDT Educational
Tau Foundation



Amy Jo Corin Brodie, Diamond Level donor, and her daughter, Dana, Alpha Mu 2012, enjoy the Foundation luncheon in Florida.

IN CELEBRATION OF

ALPHA ZETA

In honor of Lynda Viggiano Reiff and Mika Renee Singer, by Jennifer McCoy Bartko, Alpha Zeta

ALPHA NU

In honor of the birth of their son to Michelle Seligman and Kfir Weinraub on May 15, 2012, by Suzanne Stakofsky Lutz, Alpha Omicron

In honor of the Maggie Hayes, by Harold Hayes

ALPHA OMICRON

In honor of the birth of Christian Ciro to Vittoria (Provenzano) and Michael Paolillo on July 4, 2012

In honor of the engagement of Johanne Eliacin to Danny Miller on May 6, 2012

In honor of the birth of Rosa to Liat and Peter Munch on April 23, 2012
all by Suzanne Stakofsky Lutz, Alpha Omicron

ALPHA DELTA

In celebration of their 25th Anniversary, by Briana Holtzman, Gamma Delta

IN MEMORY OF

DELTA

In memory of Joan Ellis Shatkin, by Renee Kraft, Delta Alpha

ETA

In memory of Hannah Barr Grant, by Amy Grant

KAPPA

In memory of Lorainne Spinner Orner, by Robin Schweibel Miller, Gamma

In memory of Ruthie Metzger Katz, by Ruth Rotman Silverberg, Pi

CHI

In memory of Brandi Gurwitch, by Sandy Gurwitch

ALPHA MU

In memory of Darlene Schweitzer-Ramras, by Amy Jo Corin Brodie, Alpha Mu

ALPHA OMICRON

In memory of Damian Rawner, son of Kathleen Sharkey Rawner by Charmaine Eleazar-Hopkins and Suzanne Stakofsky Lutz

BETA CHI

In memory of Debra Fox's Grandfather, Sam Speer, by the Alpha Delta and Alpha Epsilon Classes of Beta Chi



Donations of \$75 by young alumnae who are committed to making a difference!

CHI: Sasha Wang

MU: Stephanie Smith

ALPHA BETA: Melissa Gitlitz

BETA TAU: Christina Roman

GAMMA DELTA: Briana Holtzman

GAMMA ETA: Diana Findley, Jessica Tweed

GAMMA LAMBDA: Lindsey Fields

DELTA THETA: Sarah Brunelle



Undergraduate and recent alumnae who have pledged \$19.17 for five years.

ETA: Deena Lipson, Carly Migdall

UPSILON: Alison Hirsch, Meredith Lefkoff

PSI: Erica Gold

CHI: Sasha Wang

ALPHA IOTA: Gillian Bailer

BETA TAU: Jennifer Cohen, Christina Roman

BETA CHI: Carli Haber, Kara Levine

GAMMA DELTA: Megan Lilly, Elizabeth Watson

GAMMA ETA: Kelly Bechtol, Emily Brochu, Diana Findley

GAMMA LAMBDA: Lindsey Fields, Rachel Kasen, Whitney Prall

DELTA ETA: Alix Generous

DELTA THETA: Charlotte Gentile



Donors who have included the SDT Foundation in their will.

Sharon Kramer Daitch, Upsilon
Sari Gold Factor, Upsilon
Janet Quartin Festinger, Rho
Carol Posner Goldstein, Alpha Lambda
Gale Symons Lazarus, Upsilon
Chickie Stein Loewenstein, Epsilon
Linda Garber Samuels, Epsilon
Sheila Garon Schwartz, Alpha Delta

ENDOWMENT GIFTS

HELENE P. GARON FUND

Sheila Garon Schwartz, Alpha Delta

DEBORAH HOFFMAN MEMORIAL FUND

Amy Jo Corin Brodie, Alpha Mu

ILENE RABINOWITZ FLEISCHMANN FUND

Ilene Rabinowitz Fleischmann, Alpha Zeta

UPSILON SCHOLARSHIP FUND

Upsilon Chapter

KAPPA SCHOLARSHIP FUND

Kappa Chapter

MATCHING GIFT COMPANIES

Lexis Nexis
Random House

thanks to our donors!

ALPHA

Evelyn Sturm Berkowitz
Janice Ostroff Bernstein
Shawn Hecht Morris
Nancy Weiss Rich
Erin Leitman Scott
Ruth Levison Shapack
Stacey Siegel
Elizabeth Belsky Stiel
Phyllis Mark Turner
Lisa Kremer Ullmann

GAMMA

Janet Callif
Esther Rockoff Feldman
Leslie Mabel Marx
Ruth Lee Barrar Meadow
Robin Schweibel Miller
Bobby Katz Sacks
Leslie Sterman Silverman
Elaine Fogel Zeff

DELTA

Marilyn Rutstein Schillroth

EPSILON

Elaine Scheuer Arnovitz
Patty Sterneck Beck
Linda Meltzer Jacobs
Debbie Berlas Lavin
Chickie Stein Loewenstein
Judith Litvak Roth
Carol Ann Gershuny Schwartz
Beth McQueen Sesler
Eileen Lichtenber Shapiro
Beverly Gershuny Williams
Julie Wallick
Sandra Zimmerman Zucker

ZETA

Aileen Weiner Dampf

ETA

Lillie Silver Axelrod
Deena Lipson
Sherilyn Bredow Maziar
Carly Migdall
Shirley Kaplan Minsk
Carly Tritt

THETA

Ghita Hill Bessman
Bernice Bessel Goldman
Lesly Klein Ozar

KAPPA

Ruth Klotz Nash
Charlotte Krasne Ramenofsky
Estelle Shapiro Robinson
Darlene Friedman Superfine
Idell Lautmann Weisberg
Barbara Slepian Zax
Lois Klein Zussman

LAMBDA

Sandra Sept Baral
Lillian Tobey Beim
Linda Agay Calhoun
Clarice Levy Fleischman
Noreen Field Friedman
Nadine Bauman Hepps
Judith Bolton Levin
Janice Wiedhopf Pollinger
Lise Rosengard
Harriet Silverman Shumacher
Gloria Barsimanto Simon
Nancy Rosen Spire

MU

Meredith Tiras
Natalie Hengst Tiras

NU

Lois Gilbert Devitt
Marion Goldetsky Klein
Sue Juster Ring

XI

Floriene Kay Lieberman
Florence Goldfinger Pack

PI

Suse Daniels Cohen
Janet Dishlip Krantz
Pauline Ruben Levey
Barbara Friedman Shlaes
Sissy Katelman Silber
Ruth Rotman Silverberg

RHO

Janet Quartin Festinger
Anne Fassler Goldstein
Gail Shavitz Kaplan
Sandra Brawer Koplon
Dawn Meister Kornfeld
Paula Fink Quarles
Diane Waggoner Wender

TAU

Suzie Weitzman Ablon
Francine Nussenblatt Beckman
Shirley Klein Davidoff
Sarah Glaubien
Phyllis Hengst
Mardi Swartz Kunik
Andrea Sour
Marilyn Saikin Stahl
Paula Schwartz Stein
Debra Mautner Tuchman

UPSILON

Diane Calderon Abrams
Pam Furst Abromowitz
Sharon Feldman Baldwin
Ann Stringer Braly
Jorie Zabel DiCocco
Lois Cohen Eskenazi
Sari Gold Factor
Susan Berke Frank
Ellen Gabovitch
Lisa McCoy Goosmann
Lois Cohen Graller
Barbara Cohen Harris
Michelle Koplrow Hershenson
Alison Hirsch
Marcie Beth Seidel Kalina
Jeanne Sacks Koplrow
Gale Symons Lazarus
Meredith Fine Lefkoff
Lesley Baker Levin
Leslie Kaufman Newcorn
Gail Friedman Pavlina
Harriet Burgheim Rodenberg
Linda Gordon Rudman
Lori Fisher Schankerman
Mindy Berland Sterns
Harriet Cohen Stone

Joan Jackson Stoner
Shirley Herowitz Wittenstein
Joan Weinberg Wolf

PHI

Carol Perlmann Aaron
Sylvia Multin Goldstein
Beth Metzger Gruber
Linda Lutzky Kramer
Audrianne Blitz Levene
Caren Silverman
Thelma Geier Zelen

CHI

Marlene Jaffa Borman
Barbara Robinson Goldberg
Nez Shubert Gross
Sandy Gurwitsch
Phyllis Leaf Jacobs
Barbara Salzmann Laifman
Michele Sorgen Lutz
Audrey Geschelin Rose
Sasha Wang

PSI

Debra Fink Kaiser
Hannah Wolff

OMEGA

Marcia Cohen
Jane Shacknow Sternberg

ALPHA BETA

Tami Goldstein Ackerman
Melissa Gitlitz

ALPHA DELTA

Lynn Stein Goldenberg
Sheila Garon Schwartz

ALPHA EPSILON

Emily Freed

ALPHA ZETA

Judy Merlin Bergman
Jennifer McCoy Bartko
Ilene Rabinowitz
Fleischmann
Carley Kramer
Elysa Luick
Lynda Viggiano Reiff
Celia Berman Shapiro
Rhoda Finn Sikov
Rae Gelb Snitzer
Carol Garber Steiner

ALPHA ETA

SuEllen Weissman Fried

ALPHA THETA

Etta Nezin Becker-Kreger
Rochelle Stutman Eisenberg
Barbara Levin Gold
Hilary Yeager Hammerman
Iris Mautner Katz
Lynn Berman Marano
Joy Littman Murray
Helen Naviasky
Gilda Brodsky Resnick
Norma Alpert Sherman
Susan Cometz White
Leslie Glueck Brown

ALPHA IOTA

Riedy Lustig Gimpelson
Lynda Blankstein Simon
Elaine Cohn Skibell

ALPHA LAMBDA

Carol Posner Goldstein

ALPHA MU

Amy Jo Corin Brodie
Victoria Carreno

Allison Newman Cuba
Bernice Littman Harris
Sheila Agid Kasewitz
Margaux Manley Lima
Leslee Lustig Magidson
Jane Agid Metzger
Marlene Snider Myers
Sue-Ann Karger Rosen
Gail Rockoff Schneider

ALPHA NU

Lynne Grundstein Groban
Mindy Gerstenhaber
Friedman
Susan Pearl Pittelman
Diane Mirsky Scholnick

ALPHA XI

Bonnie Harris Hennig

ALPHA OMICRON

Anna Maria Prinzivalli Gold
Suzanne Stakofsky Lutz
Lara Fenig Stangel
Letty Sustrin
Sheila Sustrin

ALPHA PI

Jari Rothman Goldstone
Danielle Reade Shanes
Gail Wovell Shiner

ALPHA RHO

Jody Wiesel

ALPHA SIGMA

Jani Lun Rosen

ALPHA TAU

Lauren Kaufman-Bergmann
Amy Morris
Amy Mitchell Krouse
Bethany D'Amico Stutts

ALPHA UPSILON

Robin Rodenberg English
Tiffany Larew Ferrer
Randey Foss Grossman
Marcia Davis Treby



Convention Chairman Carli Haber welcomes alumnae Betsy Blumberg Tepis, Gamma, and Nina Bloch Fishman, Xi, to the Alumnae Luncheon.

Save the Date!

Reconnect with SDT

The SDT Foundation is Coming to Phoenix!

The Sigma Delta Tau Foundation will be hosting an alumnae brunch at the Scottsdale Marriott on January 27th! Invitations will be mailed to area alumnae in December. If you are a winter resident only, please let the National Headquarters know your address to make sure you receive your invitation. You can also watch for details on the sorority website. If you have always wanted to visit the Phoenix area—do it this January and say hello to SDT! All SDT alumnae are welcome to attend, so please share this information with other SDTs.

The SDT Foundation Trustees will be in attendance, along with National President Michelle Keck Carlson, as well as National Vice President and Alumnae Chair, Caren Silverman. Our goal is to reconnect you with Sigma Delta Tau and let you know how your sorority is doing and what our plans are for the future.

If you have any questions, contact the SDT Foundation office at 317-846-7747 x 211. We hope to see you in January!

April Wright
Tiffani Ziemann

ALPHA CHI

Barbara Ament Brand
Robin Dreshfield Marks

BETA ALPHA

Karen Berk Silverman

BETA BETA

Rachel Grey Ellis
Sandra Canvasser Millman

BETA GAMMA

Sheila Gvirtz Hromadka

BETA XI

Hope Freedman

BETA ETA

Jeri Kantor Moskowitz

BETA PI

Stefanie Greenberg Chautin
Diana Pankevich

BETA TAU

Debbie Leichtnam Copeland
Debbie Reduce Eleftheriou
Melinda Jensen
Amanda Kateman
Jill Silverman Nardello
Dana Ferrara Planer
Christina Roman
Melissa Bardin Rosenblatt

BETA PHI

Kathleen Bollon-Scott

BETA CHI

Diane Barton
Lindsay Shapiro Kvasnik
Lauren Wagner Weiser
Diana Manvitz Williams

GAMMA GAMMA

Penny Rothstein Sherman

GAMMA DELTA

Briana Holtzman
Elizabeth Watson

GAMMA ETA

Kelly Bechtol
Diana Findley
Marissa Altman Gottfried
Rachel Salvage Schneider
Jessica Tweed

GAMMA LAMBDA

Lindsey Fields
Rachel Kasen
Whitney Prall
Chloe Rose
Randi Sefton Siegel
Marisa Weissman

GAMMA SIGMA

Alexis Poe Feder

GAMMA PSI

Michelle Keck Carlson

DELTA ALPHA

Renee Trent Kraft

DELTA EPSILON

Leslie Herman

DELTA THETA

Sarah Brunelle
Charlotte Gentile

FRIENDS OF THE FOUNDATION

Amy Grant
Harold Hayes
Trish Stieneker
Sharon Stern
Austin Community
Foundation
Herff Jones, Inc
Lexis Nexis
Tau Alumnae
Texas Hillel
Texas Jewish Federation
Texas SDT Educational
Tau Foundation



Convention attendees sign up for the Foundation's 1917 Club, a new giving program for SDT's young alumnae.



Attention Young Alumnae!

Are you a young alumna who wants to feel connected to SDT again? Do you miss making a difference in the lives of YOUR sisters? When you think of the SDT Foundation, does the thought of how tight your budget is come to mind? Well we have something new that can help!

The Lapis Circle is a new giving program designed to fit the lifestyles of young alumnae, so we can make a difference by giving to the SDT Foundation. The money will fund the Lapis Circle Scholarship and be awarded annually as long as the minimum of \$500 is reached. If you can give \$7.50 a month for ten months, just think, that's ten trips to Starbucks—you can do that in two weeks! Or just think \$25 a month for three months, that's equal to three nights out for you and a friend.

It doesn't take much if we do it together to help our fellow sisters succeed in college. Those who give not only will be recognized but will truly be able to make a difference!

2012 Scholarships

Undergraduate

REGENE FREUND COHANE GRANT

Grace Blake, Gamma Xi, 2013



"My non-Greek friends and family can now see what great fortune the SDT Foundation has given me and be impressed with what amazing things a national organization can do."

SDT FOUNDATION GRANTS

Gabrielle Weil, Gamma Kappa, 2014



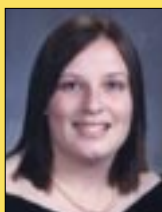
"Being a part of SDT is more than a sorority, it is like a family. Your contributions have made this grant possible and aren't unnoticed; you have made a difference in my life."

Emily Brochu, Gamma Eta, 2013



"This grant has inspired me to join the 1917 Club and encourage my Gamma Eta sisters to do the same, because I know personally the impact it has on the sisters who receive a grant."

Elizabeth Ruffino, Delta Alpha, 2013



"SDT has opened so many doors for me, including receiving this scholarship. This money will help me with my tuition. Thank you, sisters!"

Audrey Mulholland, Mu, 2014



"I can't thank you enough for a chance to relieve some of my financial burden and the opportunity to continue my studies. It is wonderful to see that sisterhood is for life."

Danielle Goldberg, Gamma Lambda, 2014



"I have realized the importance of a strong support system, as SDT is a part of my support system. I am so glad to be able to take some of the financial burden of college off of my father. Thank you from the bottom of my heart."

Wendi Albert, Beta Chi, 2013



"This scholarship will lighten my financial burden, which will allow me to focus on completing my degree and giving back to the sorority that has done so much for me."

DEBORAH HOFFMAN MEMORIAL GRANT

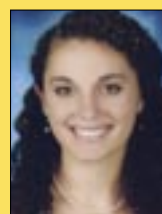
Ana Calderone, Alpha Mu, 2013



"I am not only honored but also amazed by the power SDT has to help and connect sisters. This scholarship will ease my financial burden and allow me to hold an internship without worry."

JOAN ELLIS SHATKIN GRANT

Molly Golderman, Eta, 2015



"It is an honor to constantly have the support of so many amazing sisters in all my endeavors. I cannot express my gratitude enough. I so appreciate receiving this grant."

ILENE RABINOWITZ FLEISCHMANN GRANT

Kaela Berry, Mu, 2013

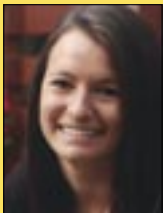


"Words cannot express how much I appreciate your kindness. This grant will benefit my college education."

thank you for helping our sisters su

RUTH COINE GRANT

Jamie Weil, Kappa, 2015



"The financial assistance will be of great help to me and my family. I will continue to work hard and strive for academic excellence to reach my goal of one day owning my own business."

UPSILON CHAPTER GRANT

Rachel Ford, Upsilon, 2013



"This grant will allow me to concentrate on my studies. I hope to one day be able to contribute to the Foundation and give back to my sisters as you have done."

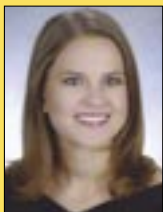
SISTER-TO-SISTER GRANT

Kelly Harrison, Delta Iota, 2015



"Thank you so much for all your donations to the Sister-to-Sister Banks. Those donations are helping me with my college expenses. It is because of our sisterhood that we are able to help each other. I am so proud to be a part of SDT."

Samantha Moore, Gamma Lambda, 2013



"This grant will have a great impact on my senior year. Thank you for donating to the Sister-to-Sister Campaign. I am humbled to receive this award."

Caitlin Moore, Beta Xi, 2013



"Your generous support is helping me make my dream of attending Union College and being a member of SDT come true. I offer my sincerest thanks for your generous support."

Ashley Thombs, Omega, 2014



"I have realized you cannot learn everything from a textbook. At SDT, I have gained the valuable knowledge of analysis, teamwork, and leadership. I will never forget what you have done for me to help me achieve my goals."

SDT NATIONAL COUNCIL GRANT

Charlotte Gentile, Delta Theta, 2013



"It is truly extraordinary to know that all the women who contributed to the well-being of my education are sisters, some of whom I have never met. You have given me such inspiration and more love than I could imagine and I promise to one day do the same. Thank you for inspiring and helping our young sisters to succeed."

Commemorate 100 Years with a Gift to the Centennial Campaign

To celebrate Sigma Delta Tau's Centennial, the SDT Foundation is proud to announce their project to raise \$1 million to fund the SDT Leadership School in perpetuity. Leadership School is one of the sorority's most important leadership programs. Please

consider a gift to help make this possible. If you would like to be a lead donor, please contact the National Headquarters at 317-846-7747, x 211. Let's leave a legacy for the future of Sigma Delta Tau and the next 100 years.



Graduate

SDT NATIONAL COUNCIL GRANT

Meredith Tiras, Mu, 2007



"I am honored to receive this financial support. SDT continues to do so much for me—we really are sisters for life."

Stephanie Smith, Mu, 2009



"These funds will aid me in paying for my MBA. I am looking forward to applying the knowledge learned to my continued involvement and experiences with SDT."

AMY APFEL TISHMAN GRANT

Lindsey Giller, Alpha, 2011



"I greatly appreciate this grant to help reduce my loans and ultimately achieve my dream of becoming a child psychologist. I cannot thank you enough."

AMY APFEL TISHMAN GRANT

Danielle Newman, Alpha, 2012



"This grant will help relieve my financial burden. I know that having the support of my SDT sisters will help me achieve my goal of becoming a lawyer."

ucceed!

Breast Cancer.

Is it in our genes? And why us?

By Susan Klugman, MD

Jewish women and, in fact, all women, ponder these questions on a daily basis as they watch more and more friends and family battle breast cancer. Approximately one in eight women will develop breast cancer in their lifetime and there are over 200,000 cases diagnosed yearly. Currently, there are over 2 ½ million women living with breast cancer in the United States.

The majority of women diagnosed with breast cancer have no family history. Only 10-15% of breast cancer has a hereditary component, meaning that the vast majority of breast cancer in this country occurs sporadically.

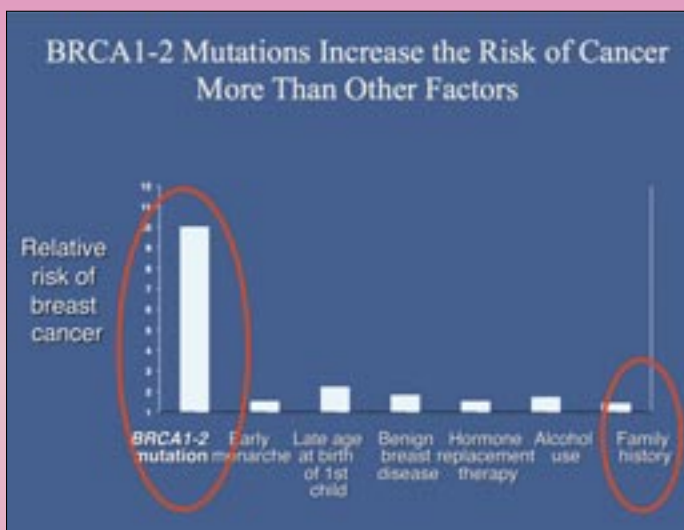
For women who have a hereditary component to getting breast cancer, the causes of their cancer can be due to mutations, or genetic changes that cause the gene to not function properly in

their BRCA genes. Approximately 7–10% of breast cancer can be attributed to mutations in the BRCA genes.

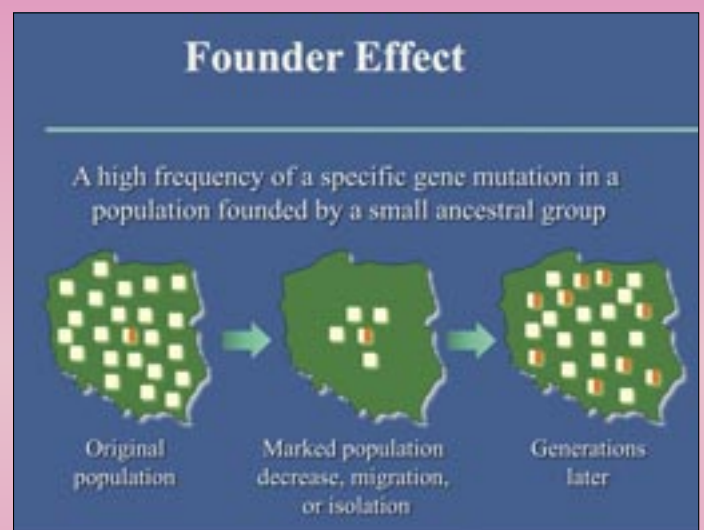
The BRCA1 and BRCA2 genes are tumor suppressor genes, and their role in the body is to prevent the development of cancer. They do so by repairing DNA. The BRCA1 and BRCA2 genes were discovered in 1994 and 1995, respectively. Everyone has two copies of each BRCA gene, and over time, mutations build up in these and other protective genes. After mutations have built up in a particular cell, the result is that the specific cell has lost its protection and develops into cancer. Typically, this process of developing cancer takes a lifetime of exposures to carcinogens, things like UV radiation, cigarette smoke, certain viruses, chemicals, etc. However, for individuals who inherit a

mutation in their BRCA1 or BRCA2 genes, the path towards cancer development is much quicker and for that reason we see more cancer develop in the family and at younger ages.

Mutations in the BRCA1 and BRCA2 genes cause a significantly increased risk for both breast and ovarian cancer. The general population's risk for breast cancer in the United States is 12.5% (~1 in 8 women develop breast cancer over their lifetime) and the risk for ovarian cancer is ~1–2% (1 in 70 women develop ovarian cancer in their lifetime). When we think about the risks that exist for BRCA mutation carriers, the comparison is striking. The lifetime risk for a BRCA mutation carrier to develop breast cancer is up to 87% and the lifetime risk for ovarian cancer is up to 44%. Men with BRCA mutations are



Out of all the risk factors for breast cancer, having a BRCA 1 or BRCA 2 mutation is the greatest risk factor.



The founder effect has been used to describe why specific ancestral groups have a higher rate of certain genetic mutations.

also at a higher risk to develop male breast cancer and prostate cancer. There has been some evidence to suggest that the risk for pancreatic cancer and some melanomas is also increased for both male and female BRCA mutation carriers. Being a BRCA mutation carrier does not mean that one will definitely develop cancer. BRCA mutation carriers are at an increased risk to develop cancer, however, some BRCA mutation carriers never develop cancer.

Since these cancer risks are so significantly elevated, identifying women with BRCA mutations can be life saving. It can provide women with the ability to increase their screening so that if cancer develops, it can be caught at an early and treatable stage. Additionally, some women decide to undergo preventive or prophylactic surgeries to reduce their risk of developing cancer.

Genetic testing is available to determine if an individual has a BRCA mutation. Although testing consists of a blood test, it is unfortunately a very expensive blood test, typically costing around \$3,000–\$4,000. Insurance does typically cover this testing if there is an appropriate indication. Due to the high cancer risks associated with mutations in these genes, family history and a personal history of cancer play an important role in determining if genetic testing is appropriate for an individual. The National Comprehensive Cancer Network (NCCN) recommends that genetic testing for mutations in the BRCA1 and BRCA2 genes be considered, for example, when a woman has

been diagnosed with breast cancer and is under 45 years of age; when she has had two primary breast cancers, with the first diagnosis occurring under age 50; when ovarian cancer has been diagnosed; when a male presents with breast cancer; or when breast cancer is diagnosed in anyone at any age who has a significant family history of multiple individuals being diagnosed with breast or ovarian cancer at a young age. Even women with no personal history of cancer or women who have a significant family history may qualify for testing.

Of note, genetic testing for mutations in the BRCA genes would be appropriate for a woman of Ashkenazi Jewish ancestry who was diagnosed with breast cancer at any age, regardless of her family history. This highlights the fact that mutations in the BRCA genes are actually quite common in the Ashkenazi Jewish population. In fact, 1 in 40 to 1 in 100 women of Ashkenazi Jewish descent is a carrier of a BRCA mutation. This is due to the concept of the “founder effect.” The founder effect can occur when a new population is started with the founder or when a current population is severely reduced in size. Currently, the world Jewish population is around 13 million, and approximately 80% are Ashkenazi Jews, most living in the United States and Israel. There are many times in history when Jews have migrated and started new populations, as well as times when the Jewish population has been severely reduced. For example, the founder passes the “defective” gene on to his or her children and the children

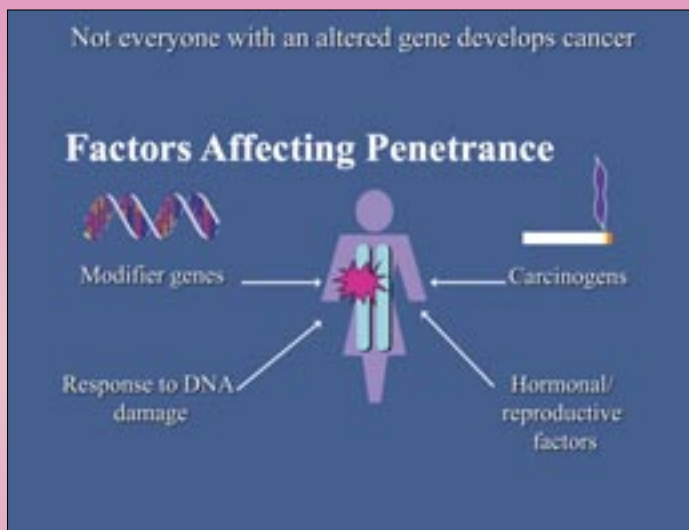
then pass that same gene on to their grandchildren, etc.

Mutations in the BRCA genes are inherited in a dominant manner, this means that for an individual with a BRCA mutation, there is a 50% chance to pass the mutation on to a child. In this way, BRCA mutations can pass through a family, from one generation to the next. Sometimes, women underestimate their risk for breast and/or ovarian cancer by only looking at their mother’s side of the family. Men can both inherit and pass on BRCA mutations, and a BRCA mutation could be passed on through male relatives, and go undetected in a family for many generations, until a woman inherits it and has an early diagnosis of breast or ovarian cancer.

Genetic testing should be done after speaking with a genetic counselor and or a medical genetics physician. There are many things to discuss that go far beyond the actual testing; these include insurance coverage, life and long-term care insurance eligibility, and family and emotional issues. All Jewish women with breast or ovarian cancer or a strong family history of these cancers should consider genetic counseling and testing. It is potentially life saving!!!!

What can you do?

- Talk to your doctor to determine if genetic counseling or genetic testing may be appropriate for you.
- Go for appropriate screening tests.
- And most importantly: Learn more about your family history!



While having a BRCA mutation can predispose one to cancer, it is not 100%. There are other factors that affect penetrance. A few of them are mentioned here.

Susan Klugman MD

Alpha Chapter, Cornell University '84

Dr. Susan Klugman is a board-certified obstetrician, gynecologist, and geneticist. She is also an associate professor of Obstetrics and Gynecology and Women’s Health at the Albert Einstein College of Medicine and the Montefiore Medical Center. She finished a Reproductive Genetics fellowship in 2004 and is currently the director of the division and the fellowship program director. She obtained her undergraduate degree from Cornell University and her medical degree from New York University.

She has practiced in the Bronx and Westchester County for the past 20 years. She recently served as the medical director for the Jewish Genetic Screening Program at Montefiore and the director of Clinical Service and Outreach for the new Yeshiva University Program for Jewish Genetic Health. She has lectured to many other Jewish organizations over the past 21 years on various topics pertaining to women’s health.



1940s



Claire Kohn Coleman

CLAIRE KOHN COLEMAN, *Penn State University '46*, is the founder of the influential International Furnishings and Design Association (IFDA). She was honored this past May at the Association's 65th Anniversary and Circle of

Excellence Evening of Distinction at the Union League Club in New York City. In 1947, Claire founded the National Home Fashions League, which created and communicated evolving trends for decades. Launched while lunching with six colleagues, Claire, fresh out of college and a cub reporter, lamented her dismay about being excluded from the all-male industry. Too young to be easily daunted and smart enough to grasp a good idea when she saw it, she took the challenge to start an organization that would focus on encouraging and promoting the presence of women in the industry. With her friends, Claire began the National Home Fashions League, which grew rapidly into a powerful platform, with a membership that included executives in every facet of the home design and furnishings industry. As her organization grew, Claire's own career took off, as well. After a stint as a reporter for *The New York Times*,

True Sisterhood

"Many years ago, more than I care to count, I met **STACIE HOLOWACHUK DELOS** when we pledged SDT at the University of Rhode Island. We became sisters, best friends, and partners in crime. We have been through a lot together, but this past week my special sister gave me the biggest gift I could ever ask for. She donated her kidney to my father. Years ago, my sisters asked me who my hero was. I always said it was my father. Stacie, you are my true hero now. Thank you, Sigma Delta Tau, for bringing my sister to me." — **DANIELLE SLOANE BROAD**, *Alpha Beta '90*

she became senior VP at a major public relations firm, where she supervised many accounts and special projects in residential and commercial interior furnishings. Today, as president of Coleman Communications, Claire continues to stay active in the organization she founded. Presently, a senior advisor for the NY Chapter, she is a Fellow of IFDA and has served as its national president, president of the New York Chapter, and has held various positions on the New York and Illinois chapter boards.

1960s

JUDY KURTZ GOLDMAN, *University of Georgia '63*, has just published her fifth book titled, *Losing My Sister*, which explores the relationship she shared with her older sister, Brenda Kurtz Meltsner (also an SDT at the University of Georgia). Judy's hope is that her memoir "will speak to any woman who has ever loved a sister." After graduation, Judy taught high school English in Atlanta, and then moved to New York to work in film and advertising. She returned to the South in 1967, when she met and married her husband. For more than 20 years, she ran her own freelance copywriting business in North Carolina. Judy has received the Sir Walter Raleigh Award for Fiction, the Mary Ruffin Poole Award for First Fiction, the Gerald Cable Poetry Prize, and the top three prizes for poetry awarded in North Carolina: the Roanoke-Chowan Prize, Oscar Arnold Young Prize, and Zoe Kincaid Brockman Prize. Her work has been published in *Real Simple* magazine and in many literary journals, including *Kenyon Review*, *Southern Review*, *Ohio Review*, *Gettysburg Review*, *Shenandoah*, and *Prairie Schooner*. She serves as an editor and mentor for beginning writers, leads writing workshops across the South, and posts writing advice on her blog, judygoldman.com/blog/. Judy lives with her husband in Charlotte, North Carolina.

1970s

ARLENE KRIEGER, *University of Arizona '70*, has just released her latest book, *Heart of a Designer*, which is a "how to" manual on

starting a clothing business. Fraught with comedy, the book details the grueling and competitive designer world. The story plays into the heart and soul of anyone who has a passion for her work. Love, sharing, and tenacity move the characters through the process of developing a national brand of clothing. *Freedom Lost Twice* was Arlene's last book, a biography of Roberto Miranda, the only person ever released from Death Row. The poignant true story makes the reader question the purpose of civil rights and the value of each human life.

1980s

LESLIE GREENBERG JOSEL, *Cornell University '85*, launched Order Out of Chaos, in 2004, when her son was diagnosed with ADHD, Executive Dysfunction, and other learning differences. In the fall of 2011, she launched her first product, an Academic Planner, as a tool to teach time management to students. The planner is currently a semi-finalist in Walmart's "Get on the Shelf" contest. Known nationally as an expert on chronic disorganization and hoarding issues, Leslie has appeared on TLC's hit television show, *Hoarding: Buried Alive*, the Cooking Channel's television special, *Stuffed: Food Hoarders*, and other national television and radio shows. She is frequently quoted in mainstream news media, such as the *Washington Post*, *New York's Newsday*, the *San Francisco Chronicle*, and *Westchester* magazine, and many other print media. Leslie was spotlighted in the March issue of *MORE* magazine's Reinvention feature. She also speaks and teaches nationally on organizational issues, special needs children, and women's entrepreneurship, as well as coaches other small business entrepreneurs. Leslie lives with her husband and son in Larchmont, New York.... **LISA SALTZMAN DARSONVAL**, *George Washington University '87*, an entrepreneur for more than two decades, has started a new enterprise in southern California entitled Santa Barbara Matchmaking. Lisa reports she is not interested in creating a mega-business, but rather a well-known, most trusted company



Judy Kurtz Goldman

Bari's Bazaar

Friends of Bari!

SDT Alumnae from Bradley University continue their support for Bari Levy Rubenstein, *Alpha Upsilon '94*. Bari, the mother of four small children, is quadriplegic and permanently on a ventilator following a staph infection that attacked her spine last year. Her sorority sisters have organized "Bari's Bazaar" in Chicago each fall. This shopping benefit helps defray Bari's medical costs. For more information, or to donate to the Bari Rubenstein Fund, please email maralewis@sbcglobal.net or visit Bari's Bazaar on Facebook.



Lisa Saltzman
Darsonval

of its kind. She was trained by a professional matchmaker on the East Coast before opening her new operation in Santa Barbara. Lisa, whose clients range from age 20 to 80, also provides coaching for those needing to learn the art of "dating." In her spare time, Lisa runs a separate business called U Fly Tandem. As a trained paraglider, she can often be seen riding down from the mountains to the beach. Check out Lisa's companies at www.sbmatchmaking.com and www.ulytandem.com.

1990s

JULIE COHEN HIRSH, *University of Kansas '94*, lives in Cleveland with husband Alex and daughters Dylan, age 8, and Logan, age 2. Julie started making jewelry when Dylan was a baby. Her lifelong obsession with jewelry has now turned into a popular online boutique. Julie Rachel

Teaching Life Lessons



DARLENE DONALD, *Buffalo State College '99*, continued her education and graduated magna cum laude from Syracuse University College of Law in '02. She worked as a prosecutor for a few years before opening her own firm in '06.

Her mother, **MARJORIE ANDREWS-HARBOLD**, an honorary sister of ΣΔΤ, is an amazing woman who has overcome adversity, excelling as a single mother of two children, a special education aide, a Professional Clown for more than twenty years, and now an author. Marjorie has dedicated her entire life to helping others. She works with hospitals, nursing homes, Hospice, veterans, children's programs, and anyone who needs her help. She is the person you can count on to make others' dreams come true.

Marjorie always has a smile on her face and is able to make even the saddest person smile. It was no surprise to her family when she decided she wanted to be a clown. She attended clown school for five years and selected "Charity" as her clown name. As Charity the Clown, she has participated in fundraisers with ΣΔΤ at Buffalo State College and many other organizations.

In 2011, Marjorie published her first children's book, *Kittens Teach Charity the Clown*, with Halo Publishing. Not too long after opening her firm, Darlene's car was struck from behind causing serious, permanent injuries to her cervical and thoracic spine. While

Darlene has struggled with the changes in her life since the accident, her mother, her sorority sister, has always supported and encouraged her. Darlene has recently undergone surgery, which she hopes will get her back on her feet and allow her to assist in making her mother's dreams come true. Marjorie wants to publish a *Charity the Clown* book series that will entertain and teach children important life lessons. She dreams that someday one of her ideas may even be turned into a movie or a video for children to enjoy.

Reaching out to ΣΔΤ was Darlene's first step in telling others about her mother's work. "ΣΔΤ gave me the opportunity to grow into the confident woman I needed to be in order to succeed. It changed and encouraged me to be the best I can be. If telling my sisters about the book brings some attention to my mother's work, it may do the same for her."



Julie Cohen Hirsh

Designs are meant to be affordable, fun, fashionable, and spiritual. She loves to keep up with current trends while designing each unique piece. Each component of Julie's designs has been thoughtfully selected and purchased from Africa, Asia,



and the Middle East. Julie's website, www.julieracheldesigns.com, has a list of gemstones and their meanings, as well as a guide to each symbol used. Whatever your reason for selecting a Mala or Buddha-inspired bracelet, the jewelry brings with it promises of health, happiness, peace, and tranquility. In addition to her website,

Julie's products can be found at several stores across the country, including Mulholland and Sachs in Cleveland.

AMY BRAVERMAN BANOCY,

Pennsylvania State University '99, lives in Alexandria, Virginia with her husband Derek and their two children, Andrew (7)



Amy Braverman Banocy

and Jacob (4). After working in advertising and marketing since graduation, Amy decided she wanted to spend more time at home with her children.

Knowing she still wanted a professional career, she decided to

become an entrepreneur. In November 2011, Amy started her own business with Rodan+Fields Dermatologists, a new company started by the doctors who created Proactive. She is quickly growing her business across the U.S. and is looking forward to the company's expansion into Canada and Mexico. Through her new position, Amy has had a chance to reconnect with many Sigma Delta Tau sisters. Every day she is empowering women to not only change their skin, but to change their lives. She is passionate in her belief that through entrepreneurship, women today can truly have it all. To connect with Amy, email her at amy.banocy@yahoo.com or check out her website at amybanocy.myrandf.com. Amy is also on Facebook and LinkedIn.

2000s

SARAH CAPLAN, *Syracuse University '04*, never thought bruised feet and uncomfortable high heels would help her become a designer. Sarah, along with her sister, **JENIFER CAPLAN**, *Tulane University '98*, started the company Footzyfolds, creating "rollable and foldable" shoes that act as lifesavers when the pain of high heels becomes unbearable. Their cute, stylish



Sarah and Jenifer Caplan, inventors of Footzyfolds.

From Kicking Back on Kirkwood . . . to Producing Shows in Hollywood

EILEEN HEISLER, *Upsilon Chapter '84*, who hails from a suburb of Chicago, attended Indiana University, where she met her writing partner, De Ann Heline. Later, she earned a B.F.A. in television from NYU's famed Tisch School of the Arts. Following graduation, Eileen and DeAnn headed for Hollywood, where they have spent the past two decades writing for some of television's biggest hits.

A break on ABC's *Doogie Howser, MD* led to Eileen's position as writer on the staff of *Roseanne*. During her tenure on *Roseanne*, the show won the Peabody Award, the Humanitas Prize, and the Golden Globe. From there, Eileen went on to produce *Murphy Brown*, where series star Candice Bergen won Emmys for episodes written by Eileen and DeAnn.

Eileen went on to become executive producer on the award-winning series *Ellen* and *How I Met Your Mother*. Following these successful productions, Ellen worked with NBC, creating and producing *Three Sisters*, *Committed* and *Lipstick Jungle*.

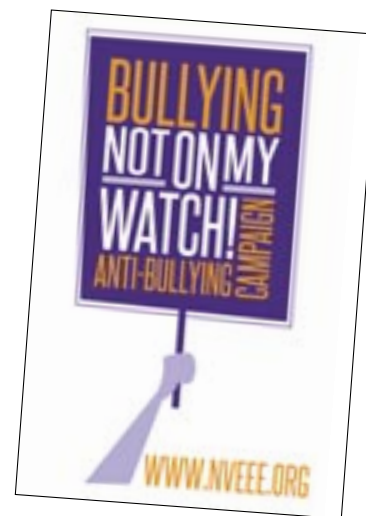
Currently, Eileen is executive producer on the fourth season of ABC's *The Middle*, which she created with DeAnn. The show focuses on the Heck Family, led by a loving mother of three, who is "middle" class, in the "middle" of the country, and is rapidly approaching "middle" age. Eileen credits her years on the Bloomington campus as inspiration for the show, which takes place in the fictional town of Orson, Indiana. Eileen used her experiences growing up and attending college in the Midwest to fuel much of the show's plot and humor, following the struggles and success of the show's Heck family. Eileen acknowledges that sorority recruitment, among other IU traditions, helped inspire several episodes.

Eileen resides in Pacific Palisades with husband Adam Wolman, a television executive, and their thirteen year-old twin boys, Justin and Ben.



shoes roll and fold to fit into women's handbags and are sold in over 3,000 locations worldwide, including Fred Segal, Dillard's, and Bloomingdale's. Footzyfolds have been worn by celebrities and have been featured in *The Oprah Magazine*, *Glamour*, *InStyle*, on *Good Morning America* and *The Today Show*. Sarah currently resides in NYC with her husband, and Jennifer resides in Miami Beach with her husband and two children. For more information please visit: www.footzyfolds.com...

JOWHARAH SANDERS, *University of Miami '05*, is the founder and executive director of National Voices for Equality Education and Enlightenment (NVEEE). The mission of NVEEE, founded in 2009, is to prevent bullying, violence, and suicide among youth, families, and communities through direct service, mentoring, and prevention education. Jowharah credits her college experience, working with SDT's Prevent



Child Abuse America, for teaching her the meaning of philanthropy. This Fort Lauderdale center uses evidence-based practices to empower students to take a

Sara Starkoff Green—Her Name Says it All!

Sara Starkoff Green, Beta Chi, *University of Kansas '01*, founded G3—Give Green Gifts in 2010, as the result of a personal “a-ha” moment. Long committed to living a green, eco-conscious lifestyle, she was struck by how much waste her family was creating from giftwrap at various gift-giving occasions. After some initial research, her concerns were confirmed: wrapping paper and shopping bags alone account for about four million tons of trash annually in the U.S. As much as half of the 85 million tons of paper products Americans consume every year goes toward packaging, wrapping, and decorating goods.

Sara initially made the commitment to use beautiful reusable bags as gift bags, but found herself using tissue paper, gift tags, greeting cards, and more just to complete a gift. She knew there had to be something better, thus The Give Bag™ was born! The Give Bag was created as a simple, fun, sustainable, cost-effective way for people everywhere to positively impact Mother Earth.

A true entrepreneur, prior to starting Gift Green Gifts, Sara opened a Palm Beach event coordination firm in 2003 and successfully produced special events for nearly a decade. In her work with events, Sara saw first-hand the need for “green elegance” across the event industry, and specifically in gift and favor presentations. Sara is a former columnist and published author, and is truly passionate about Mother Earth and committed to living green.



Sara, who lives in South Florida with her husband and their two daughters, reports, “G3 Give Green Gifts” is far more than a company, it’s a call to action. G3 Give Green Gifts is committed to creating eco-conscious lifestyle options that realistically fit into our busy lives. Our philosophy centers around the idea that starting small and committing to simple, realistic changes, can create exponentially beneficial results for Mother Earth.” To preview some of Sara’s products, please visit: www.g3givebag.com.



direct role in reducing and preventing bullying at their schools. Jowharah has also developed a school-wide bullying prevention program entitled, “Not On My Watch.” To see how Jowharah is making a difference, please visit: www.nveee.org... **MARISSA FLORINDI**, *Tulane University '08*, lives in New York City where she has pursued a career in public relations since graduation. She is currently an Account Supervisor with Edelman Public Relations supporting the Dove account. In her spare time, Marissa is

a certified personal trainer working with private clients as well as teaching group fitness classes in Central Park. Marissa also graduated from the Institute for Integrative Nutrition in December 2011. This fall, Marissa, with fellow Alpha Iota and real-life sister, Meghan Florindi, is training for her fourth half-marathon, the Jazz Half, which will take the two through their old stomping grounds—St. Charles Avenue and Audubon Park in New Orleans.

HELP WANTED

WELCOME, FARMINGDALE STATE COLLEGE!

SDT is thrilled to welcome our new Delta Lambda Colony in Farmingdale, New York! We are looking for area alumnae who might be interested in helping with the new chapter! Please contact Beth Gruber with questions about this exciting opportunity: bethgruber@yahoo.com.

CENTENNIAL!

Want to help organize an alumnae event in your community? We are on the five-year countdown to March 25, 2017! We can help plan your local event. Please contact Caren Silverman, Vice President of Alumnae at: carensilverman@me.com.

HOUSE CORPORATIONS

We are looking for alumnae to volunteer on house corporation boards in the Southeast and Midwest. No experience required! Help needed at the University of Georgia, University of Alabama, and Emory University among others. Please contact National Treasurer Rachel Ellis at: sdtlegacy@aol.com.

MEMBERSHIP RECRUITMENT HELP

Several collegiate chapters are in need of alumnae assistance with membership recruitment programs. Please contact National Vice President Alexis Feder at lexpoe@msn.com.

PHOTOS WANTED

SDT is always looking for excellent PR photographs for our magazine, website, Facebook page, brochures, etc. High resolution, please! Please send to: abrally@sigmadeltatau.com.

If we use your photo in a future issue of a *TORCH* magazine, a thank you gift card will be sent to the contributor.

SECURE YOUR FINANCES – STRENGTHEN YOUR ORGANIZATION!

GREEKBILL & SIGMA DELTA TAU

FOR FINANCIAL SUCCESS



JOIN THE OTHER
SIGMA DELTA TAU CHAPTERS
ALREADY ENJOYING THE BENEFITS
OF GREEKBILL.

GREEKBILL OFFERS YOUR CHAPTER

- *Chapter Billing & Collections*
- *Online Contracts*
- *Online Payment Options*
- *Budget Builder & Tracker*
- *Attendance /Point Tracker*
- *Monthly Statements*
- *Parent Accounts*
- *Communication Tools*
- *Member Information Reports*
- *Financial Reports*
- *Tax Prep Assistance*
- *And More!*

For more information and/or a demonstration of the
GreekBill system contact us at
sales@greekbill.com or 800.457.3816

STABILITY.
STRENGTH.
SUCCESS.





CONGRATULATIONS SDT BRIDES: (LEFT) Larry and Laura Albert Wilons, Beta Chi '08. (MIDDLE) On July 1, 2012, Vanessa Facio-Lince was thrilled to have her Gamma Beta sisters from SUNY Albany help her celebrate her special day! (L-R): Tatiana Gana, Anna Rickman, Erin Cohen Quartorolo, Tricia Leigh Clark, Jennifer Coppola Mastri, Courtney Ciccone Ramirez, Vickie Efstathiou, Cindy Nigro, Jaclyn Pryor, and Danielle El-Ani Izaac. (RIGHT) John Mark and Lindsey Davis Ashcraft, Rho '09, May 19, 2012.

RHO – University of Alabama

MARRIAGE:

Lindsey Davis ('09) married John Mark Ashcraft on May 19, 2012 in Pensacola, Florida.

OMEGA – Syracuse University

BIRTH:

Dave and Jennifer (Smokler '08) Zigler welcomed son, Chase Lane, on April 25, 2012.

ALPHA BETA – University of Rhode Island

BIRTHS:

William and Melissa (Held '99) Rubin welcomed daughter, Emma Pearl, on October 12, 2011. She joins big sister Olivia... William and Melissa (Pareti '99) Van Lenten welcomed son, Koenig Andrew, on January 17, 2012. He joins big sister Keira.

MARRIAGES:

Elise Dubin ('99) married Avi Reich on April 22, 2012 in Sharon, Massachusetts... Kristina Klurman ('00) married Bryan Weiss on July 30, 2011 in New Jersey... Jennifer Siegal ('05) married Michael Whelihan on June 9, 2012 in their hometown of Newport, Rhode Island.

ALPHA EPSILON – Purdue University

BIRTHS:

Jonni and Cari (Brady '04) Bowersock welcomed son, Brady Liam, on July 19, 2012... Adam and Lori (Brady '06) Solomon welcomed daughter, Mia Louise, on August 4, 2012.

ALPHA MU – University of Miami

ENGAGEMENTS:

Rachel Silver ('09) is engaged to Garrett Barten (ZBT Kappa Chapter). The wedding is set for May 26, 2013 in Philadelphia, Pennsylvania... Megan Minkow ('07) is engaged to Peter Kessler (AEPi Eta Sigma Chapter). The wedding will be held on March 2, 2013 in Orlando, Florida.

BETA CHI – University of Kansas

MARRIAGE:

Laura Albert ('08) married Larry Wilons on July 1, 2012 in Memphis, Tennessee.



GAMMA CHI LEGACIES! From left to right: Aubrey Kaelyn, daughter of Dave and Carrie Monoenko Street; Madison Diane, daughter of Brad and Ashley Pulver Ford; and Mia Ann, daughter of Dustin and Melissa Cook Maracle.

GAMMA BETA-SUNY Albany

MARRIAGE:

Vanessa Facio-Lince ('03) married Maurizio Vendittelli on May 27, 2012 at the Royal Palms Resort in Scottsdale, Arizona.

GAMMA ETA – University of South Florida

MARRIAGE:

Jennifer Sullivan ('99) married Brian Ivey on February 25, 2012 in St. Pete Beach, Florida.

GAMMA CHI-SUNY Geneseo

BIRTHS:

Dave and Carrie (Monoenko '04) Street welcomed daughter, Aubrey Kaelyn, on May 27, 2012... Dustin and Melissa (Cook '05) Maracle welcomed daughter, Mia Ann, on May 23, 2012... Brad and Ashley (Pulver '06) Ford welcomed daughter, Madison Diane, on May 24, 2012.

SDT Sisters are Social!

SDT sisters are social! With nearly 5,000 "likes" on Facebook and 3,500 followers on Twitter, our social media sisters know that Sigma Delta Tau networking opportunities extend well beyond our four years in college.

Do you blog? We do too! How about Pinterest? We jumped on "board" with that also! We know that our sisters are more connected than ever with smartphones, iPads/tablets, and laptops. Down the hall or across the country, Sigma Delta Tau is being shared, retweeted, and virtually talked about. Our SDT social media is front and center in that discussion and shines in the Panhellenic community.

We want you to connect with us and join in the exciting conversation. There are numerous ways to do this, including the following:

- "Like" us on Facebook: www.facebook.com/SDTSorority
- Follow us on Twitter: www.twitter.com/SDTSorority
- Read our newest blog posts: <http://bit.ly/M4Fve8>
- Check out our Pinterestboards: www.pinterest.com/SDTSorority
- Search for us on Instagram using "SDTSorority" & tag us in your best photos
- Expand your professional network on LinkedIn: <http://linkd.in/Q8oYo4> (or search "Sigma Delta Tau Official Network")
- Network with undergraduates and alumnae through our custom Facebook App: <https://apps.facebook.com/sigma deltatau>

We look forward to sharing our SDT updates with you and encourage your full participation in our social media communities.

Send your news and photos to: nationaloffice@sigmadeltatau.com!

Watch for updates on www.sigmadeltatau.com!

ETA

University of Georgia

The Eta Chapter has been very busy this past semester. In February, we held our annual family weekend where we welcomed families from all over the country. Families went to a UGA gymnastics meet, attended a wonderful banquet dinner, and a Sunday morning brunch. In March, we held our spring philanthropy, “ΣΔΤ Your Heart Out: Battle of the Chefs,” which was a dessert battle of sorority chefs. We donated all of the proceeds to the North Georgia Cottage, a sexual assault and children’s advocacy center. In April, we held a senior banquet to honor the amazing seniors to whom we did not want to say goodbye. It was bittersweet, but we know their impact on our chapter will be visible for years to come. Throughout the semester, we also held a successful Mommy Daughter Day, various sisterhood events, and Shabbat dinners. The Eta Chapter has been hard at work, and we are so proud of the amazing things that we have accomplished. We are looking forward to another productive semester!

KAPPA

University of Illinois

The Kappa Chapter had a fabulous spring semester. We are so proud to announce that we earned the highest grade point average across all of Panhellenic Council for the third semester in a row. Along with all the fun that we have, we are committed to our scholarship.

We also had an extremely successful semester in regards to our national philanthropy, Prevent Child Abuse America. Every spring, we hold a philanthropy called ΣΔΤ Late, where we sell late night food at popular locations around campus. We also incorporated a silent auction component into this year’s philanthropy, which proved to be very beneficial. All together we raised \$3,070! We are so proud of our members and the hard work everyone put in. We had a wonderful semester and are looking forward to further success in the fall.

MU

University of Southern California

The Mu Chapter of Sigma Delta Tau had a fantastic spring semester! Continuing with our participation in informal recruitment, we welcomed two additional classes to our growing sisterhood.

The Mu Chapter also continued with our tradition of philanthropy. We hosted our annual spring event, Sweet Treats, an



THE KAPPA CHAPTER celebrates Bid Day at the University of Illinois! SDT welcomed 45 new members this fall semester.

all-you-can-eat sundae bar to raise money for PCAA. On top of that, we participated in events, such as Trojan Dance Marathon, which benefits Children’s Hospital of Los Angeles, as well as our local Relay for Life, which raises awareness for cancer.

Besides philanthropy, another top focus at Mu is scholarship. We upheld our tradition of academic excellence by hosting our bi-annual scholarship dinner, which featured over ten professors from the University. We also won the Most-Improved GPA Award from our Panhellenic Council.

One of the most exciting new additions to our semester was our participation in Songfest, a sing and dance competition between pairings of fraternities and sororities. We were excited to take home the “Best Music and Lyrics” award in our first year.

We look forward to another year of growth and progress!

TAU

University of Texas

Tau Chapter underwent a lot of changes this past semester, and we could not be more excited! With our chapter going through a revitalization process, we are excited to welcome many new sisters into our chapter. We are so thankful for all the help we have received from our National Team and are so excited for the possibilities that are in store for us.

Last semester, we took great care to focus on Philanthropy and Scholarship. At our second annual Monte Carlo Casino Night, we welcomed a large attendance. The event featured games, such as Poker and Texas Hold ‘Em, as well as a vast food buffet. For our Scholarship efforts, we turned our focus toward finding a fun way to connect with professors. To do so, we created homemade Professor Muffin Baskets for each chapter member to hand out. This was the second time for this event and it has proven to be a success.



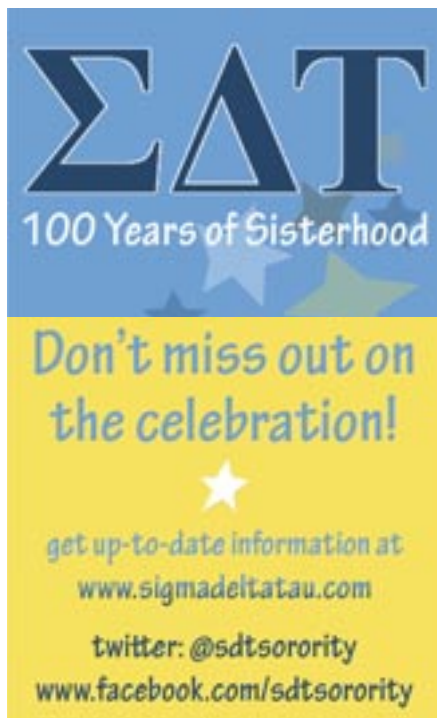
Be a Longhorn! Be an SDT!

Sigma Delta Tau's Special Recruitment at the University of Texas was a huge success! Under the leadership of the Texas Revitalization Team, SDT more than doubled the size of Tau Chapter this fall semester. The 70-woman chapter will continue to recruit new members throughout this academic year.

The National Extension Team spent a year working with the sorority's fantastic local Tau alumnae. Helen Grossfeld Gilbert, Suzanne Saikin Newberg, and Marilyn Saikin Stahl served as lead volunteers in Austin. A team of National Chapter Consultants joined the local crew to storm the University of Texas with a professional and aggressive PR campaign last spring semester.

Beth Gruber, Michelle Carlson, and Carli Haber took the lead in organizing alumnae brunches, planning recruitment events, and working closely with the Greek Life Office to ensure a successful revitalization effort. National Consultants Katrina Heinig and Heather Weisbrod will be based in Texas throughout this academic year to continue support of Tau Chapter's growing sisterhood.





The professors seem to really appreciate the gesture and the women love to get together and bake!

UPSILON Indiana University

The Upsilon Chapter had a successful recruitment this past January and welcomed 37 wonderful women into their new member class. We won Most Improved Panhellenic Chapter for Intellectual Development and Academic Support in the Greek Assessment and Awards Program (GAAP). This award was a result of the increase in our chapter GPA and the new scholarship programming that was put into place this past year. One of the many programs was a "Scholarship Scholarship" that was implemented to motivate chapter members to do well on their finals. The selected member received a reimbursement for the money she spent on textbooks for the fall semester. The Upsilon Chapter competed in the annual Little 500 women's race, which is the largest collegiate bike race in the country. The riders trained for months leading up to the race and placed significantly higher than in years past! A team of women from our chapter also competed in the Little Fifty race, which is the runner's version of the Little 500.

PSI University of Massachusetts

Our Psi Chapter excelled during the spring semester! Unfortunately, we were unable to participate in spring recruit-

Our Laurels Are Showing! Campus Honors

Alpha Chapter – *Cornell University*
Highest GPA among Panhellenic, MGLC, and IFC Members

Beta Chapter – *University of Pennsylvania*
Highest GPA on Campus
Raised \$10,000 for PCAA during "BΣΔT the HΣΔT – SDT Late Night 2011"

Eta Chapter – *University of Georgia*
Highest GPA among all 17 sororities on campus
Raised \$28,500 for PCAA during "Greek Grind"

Tau Chapter – *University of Texas*
Hyperion Award – Christina Woodard, Chapter President

Phi Chapter – *Pennsylvania State University*
Second highest GPA among Panhellenic

Alpha Beta Chapter – *University of Rhode Island*
Highest Sorority GPA at URI

Alpha Theta Chapter – *University of Maryland*
Scholarship – #1 of all Greek organizations

Alpha Mu Chapter – *University of Miami*
Raised \$18,227 for PCAA during "ΣΔT, Bid and Be Merry"

Beta Xi Chapter – *Union College*
#1 GPA of all sororities on campus
Raised \$7,473 for PCAA

Beta Tau Chapter – *Rutgers University*
Highest GPA on campus
Raised \$9,594 for PCAA during Derby Days

Gamma Eta Chapter – *University of South Florida*
Raised \$32,000 for PCAA during "Puttin on the Hits"

Gamma Lambda Chapter – *Florida State University*
Outstanding Chapter Advisor of the Year – Randi Siegel
Raised \$9,125 for PCAA during "Have Your Cake and ΣΔT it Too"

Gamma Mu Chapter – *Northeastern University*
Raised \$5,000 for PCAA during "Walk to Keep Kids Safe"

Gamma Xi Chapter – *Montclair State University*
Raised \$5,000 for PCAA during "Tricky Tray"

Gamma Rho Chapter – *Ramapo College of New Jersey*
Outstanding Chapter Advisor of the Year – Christina Roman

Gamma Tau Chapter – *Columbia University*
Chapter of the Year
Outstanding Chapter President – Rachel Reichblum
Achievement in Academics
Achievement in Campus Involvement
Achievement in Community Service
Achievement in Philanthropy
Five Star Alpha Standards

Gamma Upsilon Chapter – *SUNY Plattsburgh*
Most Improved Chapter
Mayor's Service Award

Gamma Omega Chapter – *Adelphi University*
Outstanding Fundraising for 2011–2012
Best President – Adriana Capotorto
Greek Woman Leader for the Year – Dhalia Puri
Second in Greek Week

Delta Alpha Chapter – *Eastern Michigan University*
Chapter of Excellence
New Initiate of the Year – Stacy Marks
Silent Leader – Jessica Potter
Individual Character – Michelle Carter
Individual Scholastic Achievement – Tori Klisz

Delta Zeta – *Rutgers University/Camden*
Second Highest GPA on Campus

Delta Iota Chapter – *Nova Southeastern University*
Most Improved Organization
Overall Chapter GPA Award for Panhellenic Council
New Member of the Year – Jessica Millar
Professional Award of Fraternal Excellence
Local Advisor of the Year – Heather Lancin Studenberg

ment, as we had already achieved the campus total. But that didn't stop us from promoting SDT for the upcoming fall semester! We held a beach-themed recruitment barbecue at our house,

where we were able to meet great women who we hope to see come through recruitment in the fall.

Since we didn't have a new member class, we directed our energy towards

getting the Psi Chapter together for our philanthropy events. We organized our 4th annual Autism Speaks 5k Run/3k Walk. Over 200 Amherst community members, Greek community members, students, and faculty attended and over \$16,500 was raised for the charity. We also held our “It’s grΣAT to Be a Kid” barbecue on our front porch for our PCAA philanthropy. We had a great day filled with activities and raffles and raised \$500 for PCAA.

As always, our chapter is ranked high in the all sorority GPA average. We strive to keep our grades up and are always working to better our scholarly achievements. Overall, our chapter had a great spring semester and we’re looking forward to an even better fall 2012 semester!

ALPHA BETA University of Rhode Island

The Alpha Beta Chapter had an incredible spring semester! We celebrated with our alumnae at our 65th Anniversary Party, which took place at our chapter house. The sisters had a great time listening to alumnae share stories from when they lived in the house.

Our friends and family came out for our annual Pinwheels for Prevention fundraiser in Newport, R.I. We raised approximately \$4,000 for PCAA! We said goodbye to our amazing seniors at our annual Senior Brunch, and we came in second place during Greek Week!

Panhellenic awarded us for having outstanding service and recognized our excellence in philanthropic achievement. We continue to have the highest GPA of all sororities on campus. We are looking forward to another amazing year and we wish every chapter a successful recruitment!

ALPHA EPSILON Purdue University

The Alpha Epsilon Chapter at Purdue University has been improving drastically over the spring and summer and looks forward to many more advancements throughout this fall semester. In August, we participated in a portion of our campus’s formal recruitment process for the first time and it was extremely successful. As a result, we have already seen many more women at our continuous recruitment events and expect that we will have a much higher retention rate.

For this fall semester, our chapter is looking forward to many exciting events, including a sisterhood canoe trip, an exciting new member program, resume- and career-building workshops, and, of



UPSILON SISTERS at Indiana University participate in the annual Little 500 Women’s Race ... the largest collegiate bike race in the country!

course, our annual holiday dinner. We are excited to experience the great opportunities awaiting us in the future!

ALPHA ZETA University of Pittsburgh

The Alpha Zeta Chapter had an amazing spring semester. We were thrilled to recruit nine fabulous new members during the University of Pittsburgh’s informal membership recruitment program.

We are very proud of our sisters who participated in the University of Pittsburgh Dance Marathon and Greek Sing fundraisers for the Cystic Fibrosis Foundation. We also raised funds for Prevent Child Abuse America with our Late Night Cookie Sale. During Greek Week Formal, our chapter won the Philanthropy Award for being the most philanthropic sorority on campus.

Alpha Zeta Chapter moved up two places since last semester in the scholarship rankings for Pittsburgh sororities! To celebrate our graduating seniors and alumnae, we held our annual Alumnae Brunch. We are looking forward to another successful academic year.

ALPHA THETA University of Maryland

The Alpha Theta Chapter at the University of Maryland is thrilled to be celebrating major successes. We pledged and initiated to campus quota during formal recruitment, welcoming 40 wonderful new members into our family. For the past year, we have received the highest GPA on campus and are aiming for a third semester on top, something no sorority at the University has accomplished in over a decade!

We raised a total of \$10,000 dollars for PCAA last year and are looking forward to

another successful “ΣAT Your Way Through College Park,” our signature campus event held every fall semester.

President Ilana Avergun, Vice President Julie Golden, and Vice Presidents of Recruitment Jenn Salko and Hannah Bock, represented Alpha Theta at the SDT Convention in Atlanta and were honored to bring home the crowning jewel of our recent accomplishments, a Diamond Chapter Award! We were also recognized as finalists for five campus Panhellenic awards, including Most Improved Chapter and Best New Member Program.

We kicked off fall 2012 with a sisterhood welcome back carnival, complete with cotton candy, games, and giveaways. We can’t wait to continue building on our incredible momentum in the semester to come!

ALPHA MU University of Miami

Last semester, the sisters of Alpha Mu at the University of Miami were extremely productive. We began with welcoming 54 new Sig Delts into our amazing chapter family. In addition to our own philanthropic event, ΣAT Bid and Be Merry, we participated in several other organizations’ philanthropies. One especially dear to our hearts was the Wendy Walk, a walk on Virginia Key in Miami to benefit one of our member’s mother who has a rare form of liposarcoma. Sigma Delta Tau at the University of Miami loves giving back!

ALPHA NU University of Wisconsin

Alpha Nu Chapter at the University of Wisconsin raised nearly \$1500 last semester through our philanthropy events. Our main event was a two-day midnight bake sale held on one of the busiest streets at school. We held our bake sale, called ΣAT LATE, from 10 pm–2 am for two nights, attracting students, professors, and people in the community to purchase yummy baked goods.

We made beautifully decorated signs and posters advertising our event to attract attention for our bake sale. It was very successful, even in the rain. One member would hold an umbrella over the delicious goodies, while another sister would sell them. If that isn’t teamwork, we don’t know what is! By the end of the first night, we were soaked, but we raised \$700 dollars for Prevent Child Abuse America! We look forward to ΣAT LATE every semester and can’t wait to start baking for the fall bake sale.

ALPHA TAU

George Washington University

The Alpha Tau Chapter had an incredible spring 2012 semester! We were able to host events, including informal spring recruitment, potlucks, and sisterhood events in our new SDT Townhouse. We are so excited to have a home on campus and are looking to utilize it for even more events this year.

We kicked off the semester with our second successful recruitment of the year. After a winter spent completely revamping our New Member process and six weeks of learning, bonding, and sisterhood, we welcomed 12 new sisters into our chapter. As we approach formal Recruitment this fall, we will be entering above quota for the first time in nine years! We are so proud of the hard work that our chapter has put into making our Recruitment and New Member processes amazing.

We had a great time at our spring philanthropy event, SigDelt "Speed Dating," which takes place around Valentine's Day. We love welcoming other Greeks, as well as the whole GW community, to our annual event, which raised over \$1,000 for PCAA. We also had a strong presence at GW's Relay for Life. We can't wait for another wonderful year for the Alpha Tau Chapter.

BETA XI

Union College

The Beta Xi Chapter at Union College had a very busy spring trimester. In the area of philanthropy, we held a casino night and clothing sale, with all of the proceeds going to PCAA. Additionally, we raised over \$3,500 for the Ronald McDonald House.

We also sponsored Union College's largest student fundraiser, Catwalk for a Cause, which was also directed by our former and current Chapter Presidents, Madison Lipton and Michelle Garyn. Catwalk for a Cause was a huge success, raising over \$7,000, which was donated to a start-up Charity, For the Love of Sophie. The Beta Xi Chapter is also very proud of our first place status in the Union College Relay for Life event. Having raised over \$8,000, our team achieved the #1 spot for the second year in a row, and Platinum status.

Aside from philanthropy, we were very busy during our spring trimester in the areas of social awareness, scholarship, community service, and alumnae. We proudly sponsored the city's LGBT Walk, Union College's Take Back the Night, a spring barbecue with the environmental house on campus, Ozone, and we participated in the environmentally-friendly



UNIVERSITY OF MIAMI Sig Delts are all smiles at graduation. Congrats Alpha Mu Chapter Class of 2012!

college event called Can Jam. We were very excited to team up for the first time with an MGC sorority, Lambda Pi Chi, as well as the English Department, to put on a scholarship event about the representation of women in the media. In terms of community service, we organized a Career Day with the local Lincoln Elementary School, which served to expose elementary school students to the college lifestyle and tell them of our future professional plans. The Beta Xi Chapter held its annual sisterhood event at Thatcher Park in the spring, as well as our ReUnion Weekend Alumnae Brunch. All in all, it was a very busy spring trimester for the Beta Xi Chapter and we look forward to all of the events we have in store for next year!

GAMMA DELTA

American University

The Gamma Delta Chapter of Sigma Delta Tau had another successful school

year. Members maintained an active presence on campus and continued to be diverse and successful individuals.

Our biggest philanthropy event was Sig Delt Show Down, a country-themed event, complete with a mechanical bull. Proceeds went to Prevent Child Abuse America. SDSD has become an annual tradition and will take place again in the fall. In the spring, we sold candy and donated the profits to Camp Acorn, a day camp for children and young adults with disabilities. We also increased our presence on the American University campus by attending other organizations' events such as Phi Sigma Sigma and Alpha Epsilon Pi's seventh Annual Bocce Fest, where students team up with Special Olympians for a day full of food, friendly Bocce Ball competition, and philanthropy.

This year, Gamma Delta celebrated its 25th Anniversary on American University's campus, and we celebrated

Paying It Forward . . .

Two recent graduates from SDT's Gamma Eta Chapter have decided to "give back" to their younger sisters at the University of South Florida. Nancy Segarra, '09 and Maggie Philbin, '11, have established a scholarship to be presented annually to a USF Sig Delt experiencing financial hardship. Candidates are asked to write a letter about how the scholarship will assist them in achieving their goals, as well as describe what has inspired them to be a successful professional woman after graduation.

Gina Riley, Gamma Eta '12, is the first recipient of this annual award. Gina, who is struggling with serious family health issues, conveyed her overwhelming gratitude, "I am so thankful for the much needed scholarship from Nancy and Maggie. This gift came at a critical time in my life. Their generosity confirmed my belief that I will always have my sisters and never be alone. I promise, following graduation, I will continue to pay it forward to another Gamma Eta sister in need."



GAMMA ETA SISTERS enjoy a sisterhood retreat at the Lowry Park Zoo in Tampa, Florida.

with a formal gala at the Four Seasons, to which alumnae were also invited. We enjoyed a night of classy food, music, and dancing. It was exciting to meet alumnae from the area and beyond; Amy Krouse, Immediate Past National President and former Gamma Delta Advisor, attended the event as well!

The sisters of Gamma Delta are not only great participants within the sorority, but also throughout the university and city. The president of the sorority is also the president of the Sailing Team, and another sister is president of the Jewish Student Association and began Challah for Hunger. With a GPA of 3.45, sisters are dedicated to academics. We also find time to boost our resumes and gain professional experience by interning throughout Washington, DC at organizations, such as the Office of the Comptroller of the Currency, the U.S. Committee for Refugees and Immigrants, the Hatcher Group, and Women for Women International.

Our fall Alpha Rho class and spring Alpha Sigma class added a total of 31 new members to the Gamma Delta Chapter this past school year. We are excited for fall recruitment and everything else the new academic year has in store for us!

GAMMA ETA University of South Florida

This past spring was an amazing semester for our chapter. We had a semester filled with sisterhood. In spring, we participated in many philanthropy

events, donating to causes, such as the Ronald McDonald House, Breast Cancer Awareness, and many more. Gamma Eta's hard work and dedication helped to not only raise money for these awesome organizations, but also helped to bring home five first-place trophies. Not only did we participate in philanthropies, but we also held sisterhood events to bring us all together. Our sisterhood retreat was held prior to finals at Lowry Park Zoo. It was an absolute blast and really allowed us to have some fun before the stress of finals began!

Our chapter is looking forward to this upcoming school year. On November 17, we will be hosting our annual Putting on the Hits event, where we hope to surpass the \$30,000 we raised last fall. We are also very excited for our upcoming 25th Anniversary this spring. We look forward to a fun-filled weekend spent with alumnae, celebrating an amazing 25 years of sisterhood for the Gamma Eta Chapter.

GAMMA LAMBDA Florida State University

The Gamma Lambda Chapter had an amazing year! It all started with taking quota during fall recruitment, where we welcomed our Lambda new member class. We initiated 60 new members and then 9 more in the spring semester. We are so proud of our new members and their involvement during the 2011–2012 academic year.

This year, Gamma Lambda did better than we ever have in our philanthropic

endeavors. We raised \$8,595 for PCAA through our new and improved annual philanthropy, "Have Your Cake and ΣAT it Too!" One of our favorite philanthropies will always be Dance Marathon, benefiting Children's Miracle Network and Shands Children's Hospital. This year, we were able to raise an amazing \$26,995 for the children being treated at Shands. We have big plans for a new fall philanthropy project that we are very excited to start.

Since recolonizing at FSU in 2004, our chapter has come so far in so little time. We are now second in scholarship rankings for our sororities. Lastly, the Gamma Lambda Chapter is most proud of our recent Diamond Chapter Award, and we hope the upcoming year is Diamond worthy as well!

GAMMA MU Northeastern University

The Gamma Mu Chapter is proud to have held a successful informal recruitment during this past semester. Also, by revamping our entire new member program, we feel that we were able to instill the values and ideals of Sigma Delta Tau in each of our new members. Each of these women is an asset to the chapter, and we are thrilled to have them!

The Gamma Mu Chapter continued its work with the Yawkey Family Inn, sending three sisters every Wednesday and Sunday to volunteer. We have built a lasting relationship with this institution and are excited to return in the fall. Additionally, through our "Walk to Keep Kids Safe" in the spring semester, which we held in conjunction with our annual parents brunch and silent auction, our chapter was able to raise over \$2,600 for PCAA.

Our chapter also put a strong focus on programming last spring, including events like bringing Bethenny Frankel to Northeastern, holding a big alumnae event in Boston, and also holding numerous fun sisterhood events for the chapter. We are proud to have accomplished so much last spring and look forward to a successful fall!

GAMMA PI University of Tampa

The Gamma Pi Chapter at the University of Tampa had a great spring semester, with events and activities that really focused on what it means to be a great Greek community member as well as a Sister of SDT. This semester, we held more community service projects than ever before, including spending time with kids at a children's museum, working at a soup kitchen, and even participating in a beach cleanup. Giving back to the community

really reminded our sisters about all of the great things that we can do for our community if we all come together to help.

We hosted our annual Theme Week in March, which was a week of events where all proceeds went to Prevent Child Abuse America. Our chapter hosted a campus wide volleyball game, sold Pinwheels and made a gorgeous Pinwheel garden in the middle of our campus to bring awareness to all of UT.

Gamma Pi has been working hard to create a stronger connection and presence in our community with philanthropy. Our Sisters see what an amazing difference we can make and how it can pay off for something larger than all of us!

GAMMA RHO

Ramapo College of New Jersey

Gamma Rho Chapter at Ramapo College of New Jersey had a very successful semester in the spring. We held two major philanthropy events, including our annual "Miss Ramapo" male beauty pageant and a campus-wide kickball tournament. During our participation in formal recruitment, our chapter was able to meet quota. All 19 women of our new member class were initiated. Our chapter also achieved an increase in GPA that put us above the College Panhellenic average. We are especially proud to have received our first Diamond Chapter Award at the SDT National Convention this year!

GAMMA SIGMA

Johnson & Wales University

The Gamma Sigma Chapter had an amazing event during our Winter trimester! We held an educational event, HEALTH NUTS, to teach our peers how to eat healthy. While setting up for this event, some of our sisters went to the local popular fast food restaurants, such as McDonalds, Wendy's, and Burger King, to collect their nutritional facts. After realizing how much sugar and fat was in many teens' favorite foods we felt that students should be able to visualize what they are eating. Crisco was used to portray the amount of fat in the chosen item and we used real sugar to portray the amount of sugar in the same item. We scooped the proper amounts of fat and sugar into separate Ziploc bags and labeled each bag, displaying them for all to see. Everyone was astonished by these amounts!!

Healthy snacks, such as nuts, dry fruit, and green tea, were handed out. A George Foreman grill was even brought in so our sisters could make low fat veggie quesadillas and veggie burger samples. They were a big hit! The main event during HEALTH



Leslie Glueck Brown, SDT National Council Member and a graduate of SDT's Alpha Iota Chapter at Tulane University, pictured with her daughters, Jordan and Jessica.

The Legacy Dilemma...

Sigma Delta Tau is approaching our 100th Anniversary. With each passing year, we realize the number of SDT legacies is ever increasing. Most of our chapters are finding so many legacies now participating in membership recruitment that it is impossible to extend a bid to all of them.

Each semester, our National Headquarters receives calls and emails from unhappy alumnae whose legacy was not extended a bid to join our sisterhood. We, too, want to avoid this pain and frustration.

The only answer to the legacy dilemma is education. We will continue to educate our collegiate chapters on the value of pledging legacies. We must also make our daughters, sisters, and granddaughters aware that legacies cannot be guaranteed a bid.

We believe our legacies have a very deep sense of commitment to Sigma Delta Tau. They are a special gift, deserving of special courtesy. We want to extend that exceptional welcome to your legacy, but we need to know where and when she is participating in sorority recruitment. Please let us know ahead of time where your legacy will be attending college.

As an alumna, please encourage your legacies to participate in the Greek system, but don't insist she make the same choice you did. Different types of young women fit into different chapters. Our chapters differ from campus to campus and change from year to year. Every National Panhellenic Conference organization offers a worthwhile college experience.

Please remember to register your legacy at: www.sigmadeltatau.com/alumnae or call our National Headquarters at 317-846-7747. We want to be certain that your special legacy is treated as a member of the family!

NUTS was our cooking demonstration. We asked a friend of our sorority, who is also a culinary major, to prepare a healthy snack in front of the whole audience. Everyone learned how to make a healthy, low fat black bean chili dip.

After successfully meeting quota at JWU's formal recruitment, we welcomed 22 new wonderful members into our sisterhood last February. All of whom participated, along with many other sisters, in JWU Greek Life's annual Dance

Marathon to benefit The Boys and Girls Club, along with walking in our local Relay for Life that same week. To wrap up the year, we raised \$2,000 for PCAA!

GAMMA TAU Columbia University

The Gamma Tau Chapter at Columbia University had an incredibly successful spring semester, raising over \$1,000 for PCAA, participating in Relay for Life and Dance Marathon, welcoming a new mem-



Be Social. Be Excellent. Be An Every/Day Hero!

This past summer, SDT sisters took one more step in their commitment to empowering others.

Joining forces with Mike Dilbeck, creator of the Response Ability Project, the SDT National Board of Directors voted to sponsor the Every/Day Hero Campaign. This crusade equips everyday people to intervene and take action against bystander behaviors that negatively impact our society. Included in the campaign are materials and resources on: bullying, hazing, discrimination, alcohol/substance abuse, and sexual assault.

Mike led an educational workshop at the sorority's National Convention in June, introducing the often overlooked role and responsibility of the "bystander." Attendees took the pledge "to use my values as my compass, to go beyond any barriers, and to take action to foster change." Since June, hundreds of sisters across the country have pledged their commitment "to live an extraordinary life being an every/day hero."

SDT National volunteers Christina Roman and Tiffani Ziemann attended the "Be The Person" seminar this past summer to kick off the Every/Day hero project. Loyola University served as a beautiful host location, however, the real classrooms were the streets of Chicago. Over half of the event took place on sidewalks, on the train, around major landmarks, and in real interactions with the people of the Windy City. The seventy attendees discovered the opportunity and responsibility that every individual has to be the inspiration, the leader, and the change agent. Reacquainted with their true personal purpose and values, all participants departed the seminar with the social awareness, self-confidence, and personal power to intervene in problem situations.

For more information on this groundbreaking event, please visit: www.raproject.org.

Attention: Rho Collegians and Alumnae

Help Celebrate our SDT-ZBT Partnership!

Join us for the ZBT Chapter Home Rededication Weekend at the University of Alabama, February 15-17, 2012. Registration due by December 31.

Please contact Lindsay Ashcraft at bamasdt@gmail.com for details.

ber class of 62 women, and honoring our 24 graduating seniors.

In April, we hosted our first "Greek Beats" event, an inter-greek dance competition featuring many of Columbia's sororities and fraternities. Our entire chapter was very involved in the hosting of this event. Sisters recruited organizations to

perform, helped choreograph performances, and sold concessions throughout the evening. It was truly a wonderful event!

At Columbia's Greek Awards Ceremony in February, we were honored to receive seven awards: Achievement in Academics, Achievement

in Campus Involvement, Achievement in Community Service, Achievement in Philanthropy, Five Star Alpha Chapter, Chapter President of the Year (for outgoing president, Rachel Reichblum), and Chapter of the Year!

GAMMA UPSILON SUNY Plattsburgh

During the 2012 spring semester, the sisters of the Gamma Upsilon Chapter had many great accomplishments. We had much success with raising money for Prevent Child Abuse America. We raised \$375 dollars during our biggest event, "Are You Smarter Than A Fifth Grader?" With scholarship being one of the most important elements to the sorority, our

scholarship chair put together study hours based upon each sister's GPA. It helped all of us to strive to reach our goals. We also had the opportunity to meet many great women during our recruitment events. We had eleven new amazing sisters join our chapter this past semester and we couldn't be happier. Overall, we had a great semester and we are looking forward to so much more this fall!

GAMMA PHI York College of Pennsylvania

The sisters of the Gamma Phi Chapter had an excellent spring semester. Our chapter expanded, as we welcomed 13 wonderful new members. We kicked off our philanthropy with a Knock Out Tournament to raise money for Prevent Child Abuse America. The tournament was a \$1 entry and winners received various prizes. We also participated in Relay for Life, as we do every year. Many of our sisters are affected by cancer in some way. We ended our semester with an Alumnae Day at our chapter house. We are all excited to spend the coming semester together and we are looking forward to another successful year!

DELTA ALPHA Eastern Michigan University

The Delta Alpha Chapter had an amazing 2011-12 school year! We celebrated our 20th Anniversary at EMU with a spectacular Alumnae celebration. We won the Chapter of Excellence award in our Greek Standards and Assessment Program. Our chapter's overall GPA was 3.28 for the spring 2012 semester. We organized a very strong scholarship program that involves campus-wide study sessions for final exams.

With eight of our members attending, we had the largest Greek representation at LeaderShape in May 2012. We take pride in our involvement at EMU's annual Relay for Life, for which we raised \$1,200. We cannot wait for another year of involvement and progress.

DELTA ZETA Rutgers-Camden University

The Delta Zeta Chapter at Rutgers-Camden University attended the Anna Foundation's annual charity event on Sunday, April 1, 2012. The event, hosted by Lin Rubright, was a great night that included a Chinese auction, silent auction, and lots of dancing to raise money for Downs Syndrome Awareness and Inclusive Education for children with special needs. The Sisters of the Delta-Zeta Chapter helped with registration, served food and drinks, sold raffle tickets, manned the auction, encouraged partici-



Save the Date!

Sigma Delta Tau Leadership School!

February 22-24, 2013
The Tremont Suites Hotel Baltimore, Maryland

pation in the silent auction, and kept the audience entertained with a spur-of-the-moment dance battle. The night was overall a huge success and we can't wait to help again next year!

DELTA ETA College of Charleston

The Delta Eta Chapter had a great spring semester! We initiated three new women in March through our informal recruitment program. Our sisters spent the semester participating in bonding activities and Greek Life competitions.

We held our philanthropy event, Sig Delt Slam, which is a dodgeball tournament, at the end of the semester and raised \$200 for PCAA. We also volunteered at a children's center where we cleaned up the gardens and the inside of the facility.

Delta Eta Chapter moved up two places in the overall Greek Life chapter rankings and we moved up one space in our scholarship ranking. We finished our semester with our formal event, where all the sisters had a wonderful time. It was also where many sisters said their final good-byes to our graduating seniors.

DELTA THETA Pace University

The Delta Theta Chapter at Pace University has definitely had its best semester yet! We were awarded Best Sorority on Campus and we were the winner of Pace's Greek Week competition. Our wonderful new members had the highest GPA of any new member class on campus. We threw many on-campus

events that promoted education and safety and we are very happy to have made a big impact on our school community.

Our chapter was fortunate enough to send seven sisters to SDT National Convention in Atlanta, where we brought home six awards! At the convention, our chapter initiated an amazing new member, Gita Shorr, and we look forward to keeping a close relationship with our new sister.

DELTA KAPPA Western Connecticut State University

This past spring was the most exciting semester that Delta Kappa has experienced thus far. On March 25, 2012, we had the honor of being joined by members of the National Council and WCSU's administration, sisters from area chapters, alumnae, family, and friends as we were installed as the 100th chapter of SDT. The feeling all of us shared on that day was one of sisterhood and pride, knowing that all of our hard work had more than paid off. Being able to celebrate in the company of sisters who have all walked the same road as us was a wonderful honor and made the reception truly special. We even received Outstanding Programming for a Greek Organization at WCSU's Awards Banquet for our Installation reception!

We are truly grateful for all of the help which we have received from our National Organization along our journey and could never say thank you enough. We can't wait to show you what we're made of as a chapter and share the beauty of SDT with the young women here at WCSU.



Southern Sisters Break all Records!

Every collegiate chapter of SDT supports PCA America, however, four of our southern chapters have broken their own previous records! Congrats to our SDT chapters at the University of South Florida, University of Miami, Florida State University, and University of Georgia. Their total 2011–12 donations to PCAA exceeded \$85,000!

SDTs across the country have joined forces to distribute “Pinwheels for Prevention.” The pinwheel is the symbol for child abuse prevention, an uplifting reminder of childhood and the bright future that all children deserve. Our Sig Delt chapters across the country have utilized community and campus activities to distribute pinwheels and educational materials, reinforcing the need for new public policies. Healthy child development serves as a foundation for both community and economic development.



Prevent Child Abuse America Three Decades of Empowerment 1982–2012

Sigma Delta Tau has been empowering families, women and children for over thirty years through our National philanthropic partnership with Prevent Child Abuse America. This year, as we celebrate our 30 Year Anniversary, record breaking donations brings us close to the 1.5 million dollar mark for total contributions. Over the past three decades, in addition to fund-raising, alumnae and undergraduate sisters have joined together in sponsoring campus-wide educational programs and hands-on community service projects.

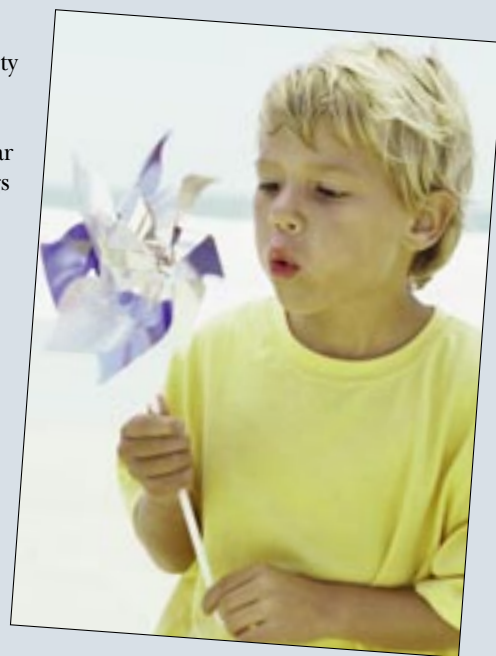
SDT joins the other 25 National Panhellenic Conference groups in donating time, energy, money, and commitment to support thousands of local and national charities across the nation. Last year alone, NPC reported over 3,000 sorority chapters volunteered close to one million hours and over \$3 million to philanthropic projects.

Many of SDT’s innovative philanthropic programs for the Prevention of Child Abuse have developed into enormous annual campus events. Gamma Eta Chapter at the University of South Florida continues to surpass the \$30,000 mark annually with its campus-wide “Puttin’ on the Hits” lip sync program. SDTs at the University of Maryland once again donated over \$10,000 to our National philanthropic partner; the majority of these proceeds were raised through their most successful “ΣΔΤ Your Way Through College Park” program last fall.

SDTs at the University of Pennsylvania increased their contribution to PCA America to \$10,000 this year through their “ΒΣΔΤ the ΗΣΔΤ” SDT Late Night. Eta Chapter at the University of Georgia surpassed its previous record by contributing \$28,500 to Prevent Child Abuse America, following another productive “UGA Idol” competition. University of Miami Sig Deltas added over \$18,000 to our PCA total from their annual “ΣΔΤ, Bid and Be Merry.” Beta Tau Sisters at Rutgers University had another successful “Derby Days” event, plus added some successful food and candy sales to raise close to \$10,000. Florida State SDTs topped the \$9,000 mark with their popular “Have Your Cake and ΣΔΤ It Too!” Our Beta Xi Sisters at Union College added over \$7,000 to our record-breaking total though year-long fund raising activities.

Healthy families mean healthy children, healthy communities, a thriving economy, and a strong nation. Child abuse and neglect affects over one million children every day. Child abuse and neglect costs our nation \$220 million every day. These costs include foster care, medical and mental health treatment, special education, as well as juvenile and adult crime. Child abuse and neglect are preventable.

SDT National Council Member Felicia Brody Kolodner sits on the Board of Directors for Prevent Child Abuse, America. Felicia reports, “Since 1982, Sigma Delta Tau has helped PCA America to build awareness, provide education, and inspire hope to everyone involved in the effort to prevent the abuse and neglect of our nation’s children. We are all looking forward to expanding this dynamic partnership next year to include a bullying prevention initiative focusing on innovation, best practices, and replicability. How exciting to see our collegiate sisters continue their passion about valuing children, strengthening families, and engaging communities nationwide.”



SIGMA DELTA TAU



STERLING SILVER
BEADS



FITS ALL MAJOR
BRACELET LINES



TO SEE FULL
LINE GO TO

SCHOOLBEADS.COM

School Beads
PO BOX 91
Clawson, MI 48017

PAST NATIONAL PRESIDENTS

1918-22 Regene Freund Cohane	1968-70 Patricia Jackson Linderman
1922-24 Adele H. Land	1970-72 Harriet Burghheim Rodenberg
1924-26 Miriam Hoffman Jacobs	1972-76 Joan Ellis Shatkin
1926-34 Miriam Simon Levy	1976-80 Carol Stein Loewenstein
1934-35 Mildred Elkes Wallens	1980-84 Roberta Katz Sacks
1935-36 Miriam Simon Levy	1984-88 Lynn Berman Marano
1936-42 Roselyn Mathews Reisman	1988-92 Karen Sorkin Braverman
1942-48 Leah Affron Kartman	1992-94 Sari Gold Factor
1948-50 Doris Lesser Garbose	1994-98 Elizabeth McQueen Sesler
1950-54 Miriam Rosenbloum Grant	1998-2002 Mardi Swartz Kunik
1954-58 Ruth Metzger Katz	2002-2006 Beth Metzger Gruber
1958-60 Rose Fisher Michel	2006-2010 Marissa Altman Gottfried
1960-64 Ray Sommer	2012-2012 Amy Mitchell Krouse
1964-68 Lorraine Spinner Orner	

BOARD OF DIRECTORS

President: Michelle Carlson 420 E. 61st Street, #32B, New York, NY 10065
Email: gostdt@yahoo.com, H: 212-988-6964, C: 917-449-8500

Vice-President: Tami Ackerman 1 West Penn Street, Long Beach, NY 11561
Email: TamiRAckerman@gmail.com, H: 516-208-3077, C: 718-986-6298

Vice-President: Debbie Eleftheriou 36 Forman Lane, Manalapan, NJ 07726
Email: debduce@aol.com, H: 732-761-0078, C: 732-618-8085

Vice-President: Alexis Feder 56 Hedgerow Lane, Manalapan, NJ 07726
Email: lexpoe@msn.com, H: 732-414-1031, C: 973-568-2569

Vice-President: Margaux Manley Lima 3322 N Street, NW #4, Washington, DC 20007
Email: margaux310@aol.com, C: 305-467-1412

Vice-President: Caren Silverman 2201 Cherry St, Apt #302, Philadelphia, PA 19103
Email: carensilverman@me.com H: 215-246-0668, C: 215-901-1021

Secretary/Treasurer: Rachel Ellis 13710 Vernon St. Oak Park, MI 48237-1387 Email: SDTLegacy@aol.com, H: 248-547-8557, C: 248-880-8892

Immediate Past President: Amy Krouse 13219 Wrenn House Ln, Herndon, VA 20171
Email: krouseSDT@yahoo.com, H: 703-860-2677, C: 312-371-6947

NPC Delegate: Lynn Marano 853 Kings Retreat Drive, Davidsonville, MD 21035
H: 410-798-6670, Email: billandlynnmarano@verizon.net, C: 443-756-2737,

SIGMA DELTA TAU HEADQUARTERS

714 Adams Street, Carmel, IN 46032
PHONE: 317-846-7747 FAX: 317-575-5562
nationaloffice@sigmadeltatau.com

For a complete list of headquarters staff, committee chairmen, and chapter advisors, go to www.sigmadeltatau.com.

SIGMA DELTA TAU FOUNDATION OFFICERS

President: Sari Factor, 7350 N Via Paseo del Sur, Scottsdale, AZ 85258;
847-951-5030 (H), E-MAIL: sgfactor@gmail.com

Vice-President: Carol Ann Schwartz, 5159 Bayberry Lane, Cincinnati, OH 45242
513-793-0024 (H), E-MAIL: caschw1216@aol.com

Secretary/Treasurer: Lynda Reiff, 83 Pruitt Farm Road, Deatsville, AL 36022
330-506-6837 (H), E-MAIL: reiff34@aol.com

FOUNDATION TRUSTEES

Roberta Aaronson, 1 Angus Lane, New City, NY 10956
845-634-0580 (H), E-MAIL: mumpbabe@aol.com

Amy Brodie, 700 NW 100 Terrace, Plantation, FL 33324
954-452-0842 (H), E-MAIL: a1bro@aol.com

Alyssa Chaikind, 2025 Broadway Apt 25D, New York, NY 10023
212-769-3201 (H), E-MAIL: AChaikind@aol.com

Hope Freedman, 205 E. 95th St. #4H, New York, NY 10128
212-735-5789 (H), E-MAIL: hfreedman@yahoo.com

Anna Gold, 1831 80th Street, Brooklyn, NY 11214
718-758-4485 (H), E-MAIL: goldnvalli@aol.com

Hali Herman, 1679 Webster Avenue, Merrick, NY 11566
516-992-0996 (H), E-MAIL: wondermon318@aol.com

Suzanne Lutz, 337 Brookfield Avenue, Staten Island, NY 10308
347-562-4097 (H), E-MAIL: sdtgemini@aol.com

Lindsay Kvasnik, 6901 E. Chauncey Lane, #213, Phoenix, AZ 85054
612-270-8060 (H), E-MAIL: lindsaykvasnik@gmail.com

Gail Regenbogen, 3637 Palm Canyon Drive, Northbrook, IL 60062
847-564-3011 (H), E-MAIL: fonzie329@aol.com

Danielle Russo-Slugh, 329 W. 12th Street, Ship Bottom, NJ 08008
609-494-1818 (H), E-MAIL: russoslugh@gmail.com

Nancy Spire, 1303 Avenida De Cortez, Pacific Palisades, CA 90272
310-454-8063 (H), E-MAIL: nancysberk@aol.com

Lara Stangel, 37 Smith Farm Road, Bedford, NY 10506
917-234-6515 (H), E-MAIL: lalalilu2@aol.com

NATIONAL PANHELLENIC CONFERENCE

Delegate: Lynn Marano, 1410 Knightsbridge Turn, Crofton, MD 21114
301-261-0411 (H), FAX: 410-663-8025 c/o Bill Marano,
E-MAIL: billandlynnmarano@verizon.net

Alternate Delegates:

Carol Loewenstein, 11201 Old Post Road, Potomac, MD 20854
301-299-7260 (H), FAX: 301-299-1151, E-MAIL: sdtchic1020@yahoo.com

Beth Gruber, 10 English Ivy Lane, Lake Grove, NY 11755
631-738-1211 (H), FAX: 631-648-8678, E-MAIL: bethgruber@yahoo.com

Marissa Gottfried, 2197 Hacienda Terrace, Weston, FL 33327
954-389-0740 (H), FAX: 954-467-7030, E-MAIL: marissarg@aol.com

SIGMA DELTA TAU Chapter Directory

ALPHA <i>Cornell University</i> Ithaca, NY	CHI <i>University of Michigan</i> Ann Arbor, MI	ALPHA XI <i>Boston University</i> Boston, MA	GAMMA ALPHA <i>SUNY at Binghamton</i> Binghamton, NY	GAMMA MU <i>Northeastern University</i> Boston, MA	GAMMA OMEGA <i>Adelphi University</i> Garden City, NY
BETA <i>University of Pennsylvania</i> Philadelphia, PA	PSI <i>University of Massachusetts</i> Amherst, MA	ALPHA TAU <i>George Washington University</i> Washington, DC	GAMMA BETA <i>SUNY at Albany</i> Albany, NY	GAMMA NU <i>SUNY at New Paltz</i> New Paltz, NY	DELTA ALPHA <i>Eastern Michigan University</i> Ypsilanti, MI
DELTA <i>SUNY at Buffalo</i> Buffalo, NY	OMEGA <i>Syracuse University</i> Syracuse, NY	ALPHA UPSILON <i>Bradley University</i> Peoria, IL	GAMMA GAMMA <i>Hofstra University</i> Hempstead, NY	GAMMA XI <i>Montclair State University</i> Upper Montclair, NJ	SDT at Waltham <i>Brandeis University</i> Waltham, MA
ETA <i>University of Georgia</i> Athens, GA	ALPHA BETA <i>University of Rhode Island</i> Kingston, RI	BETA BETA <i>Michigan State University</i> East Lansing, MI	GAMMA DELTA <i>American University</i> Washington, DC	GAMMA PI <i>University of Tampa</i> Tampa, FL	DELTA EPSILON <i>Emory University</i> Atlanta, GA
KAPPA <i>University of Illinois</i> Urbana, IL	ALPHA EPSILON <i>Purdue University</i> West Lafayette, IN	BETA ZETA <i>Queens College</i> Flushing, NY	GAMMA EPSILON <i>SUNY at Oneonta</i> Oneonta, NY	GAMMA RHO <i>Ramapo College of NJ</i> Mahwah, NJ	DELTA ZETA <i>Rutgers University-Camden</i> Camden, NJ
MU <i>University of Southern California</i> Los Angeles, CA	ALPHA ZETA <i>University of Pittsburgh</i> Pittsburgh, PA	BETA XI <i>Union College</i> Schenectady, NY	GAMMA ZETA <i>SUNY at Cortland</i> Cortland, NY	GAMMA SIGMA <i>Johnson & Wales</i> Providence, RI	DELTA ETA <i>College of Charleston</i> Charleston, SC
RHO <i>University of Alabama</i> Tuscaloosa, AL	ALPHA THETA <i>University of Maryland</i> College Park, MD	BETA PI <i>University of Rochester</i> Rochester, NY	GAMMA ETA <i>University of South Florida</i> Tampa, FL	GAMMA TAU <i>Columbia University</i> New York, NY	DELTA THETA <i>Pace University</i> New York, NY
TAU <i>University of Texas</i> Austin, TX	ALPHA IOTA <i>Tulane University</i> New Orleans, LA	BETA RHO <i>University of Virginia</i> Charlottesville, VA	GAMMA THETA <i>SUNY at Cortland</i> Cortland, NY	GAMMA UPSILON <i>SUNY at Plattsburgh</i> Plattsburgh, NY	DELTA IOTA <i>Nova Southeastern University</i> Ft. Lauderdale, FL
UPSILON <i>Indiana University</i> Bloomington, IN	ALPHA MU <i>University of Miami</i> Coral Gables, FL	BETA TAU <i>Rutgers University</i> New Brunswick, NJ	GAMMA IOTA <i>University of Hartford</i> West Hartford, CT	GAMMA PHI <i>York College of Pennsylvania</i> York, PA	DELTA KAPPA <i>Western Connecticut State University</i> Danbury, CT
PHI <i>Pennsylvania State University</i> University Park, PA	ALPHA NU <i>University of Wisconsin</i> Madison, WI	BETA NU <i>SUNY at Stony Brook</i> Stony Brook, NY	GAMMA KAPPA <i>SUNY at Oswego</i> Oswego, NY	GAMMA CHI <i>SUNY at Geneseo</i> Geneseo, NY	DELTA LAMBDA COLONY <i>Farmingdale State College</i> Farmingdale, NY
		BETA CHI <i>University of Kansas</i> Lawrence, KS	GAMMA LAMBDA <i>Florida State University</i> Tallahassee, FL		



Nonprofit Org.
U.S. POSTAGE
PAID
Bolingbrook, IL
Permit No. 374

Sigma Delta Tau Headquarters
714 Adams Street
Carmel, Indiana 46032

Change Service Requested

Attention SDT Parents: Your daughter's magazine is sent to her permanent home address while she is in college. We hope you enjoy reading it too! If she is no longer in college and is not living at home, please send her address to our National Office, 714 Adams Street, Carmel, IN 46032 or via e-mail to nationaloffice@sigmadeltau.com. Thank you for helping us keep our database current.

CHANGE OF ADDRESS OR NAME REPLY (Please Print)

(Members are responsible for all address changes. Cut out this change form and mail to the SDT National Headquarters or email info to nationaloffice@sigmadeltau.com.)

Name (first, maiden, last): _____ Chapter: _____

Grad Year: _____ Phone: () _____ E-mail: _____

Check appropriate box: New Marriage Divorce New Address I do not wish to remain on the *Torch* mailing list.

New Name (if different from the label): _____

New Address: _____ City: _____ State: _____ Zip: _____



The 2012–14 SDT National Board of Directors has pledged to work as teammates with every collegiate chapter and alumnae sister. "Unity Begins with U" is their theme as Sigma Delta Tau prepares for the next century of sisterhood!